

LED LUMINAIRE ANALYSIS: START-TO-FINISH

A Back-to-Basics TracePro Webinar

July 30, 2014

Presenter

- **Presenter**

Dave Jacobsen

Sr. Application Engineer

Lambda Research Corporation

- **Moderator**

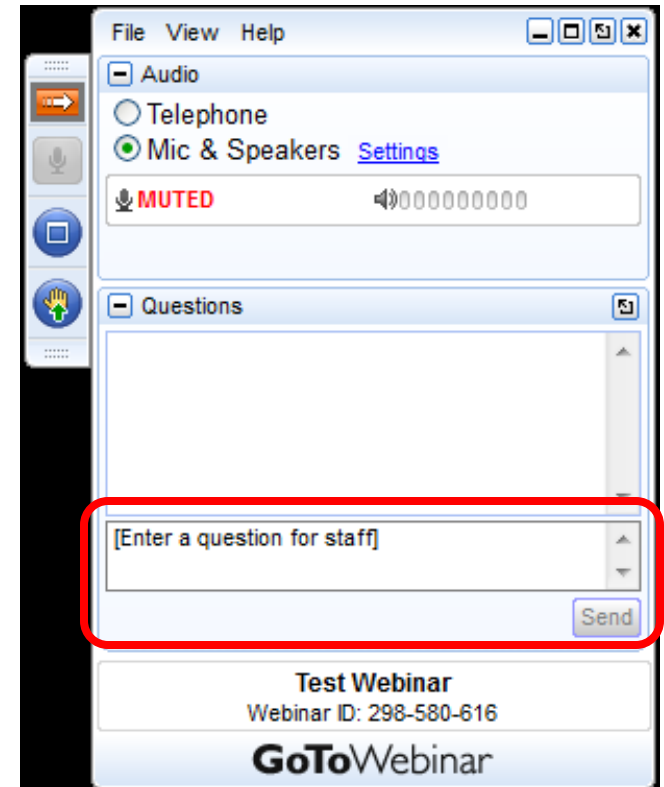
Mike Gauvin

Vice President of Sales and Marketing

Lambda Research Corporation

Format

- A 25-30 minute presentation followed by a question and answer session
- Please submit your questions anytime using Question box in the GoToWebinar control panel



Additional Resources

- Past TracePro Webinars

<http://www.lambdares.com/webinars>

- TracePro Tutorial Videos

<http://www.lambdares.com/videos>

- TracePro Tutorials

<http://www.lambdares.com/features/tracepro-tutorials>

- Information on upcoming TracePro Training Classes

<http://www.lambdares.com/training/software-training>

Upcoming TracePro Training

- **KU Leuven Ghent, Belgium**

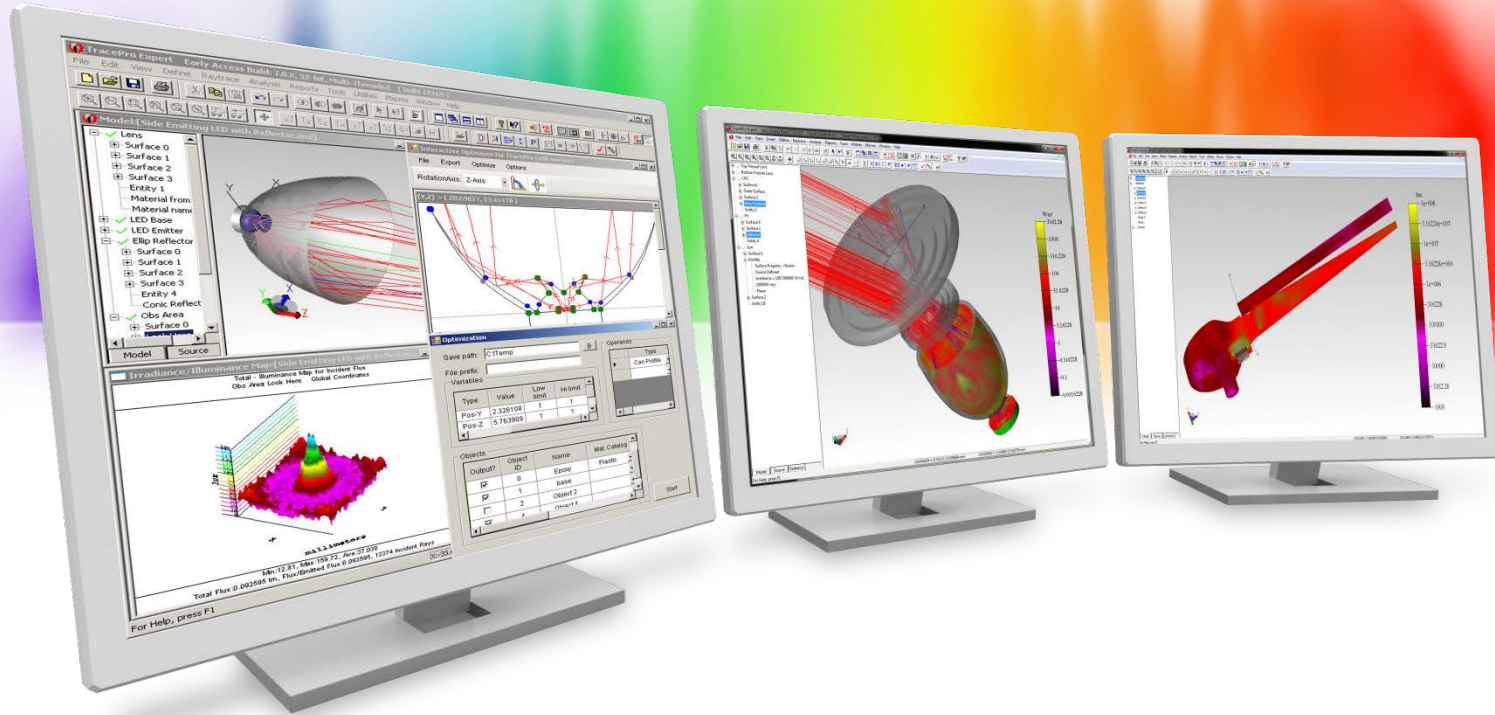
- Introduction to TracePro – Sept. 16 -17, 2014
- Optimization with TracePro– Sept. 18, 2014

- **Littleton, MA USA**

- Introduction to TracePro – Oct. 6 – Oct. 7, 2014
- Optimization with TracePro – Oct. 8, 2014
- Stray Light Analysis Using TracePro – Oct. 9, 2014
- Scheme Macro Programming – Oct. 10, 2014

LED Professional Symposium and Expo

- **Bregenz, Austria**
 - LED Luminaire Design Optimization - Theory, Methods, and Applications Workshop – October 2, 2014



LED LUMINAIRE ANALYSIS: START-TO-FINISH

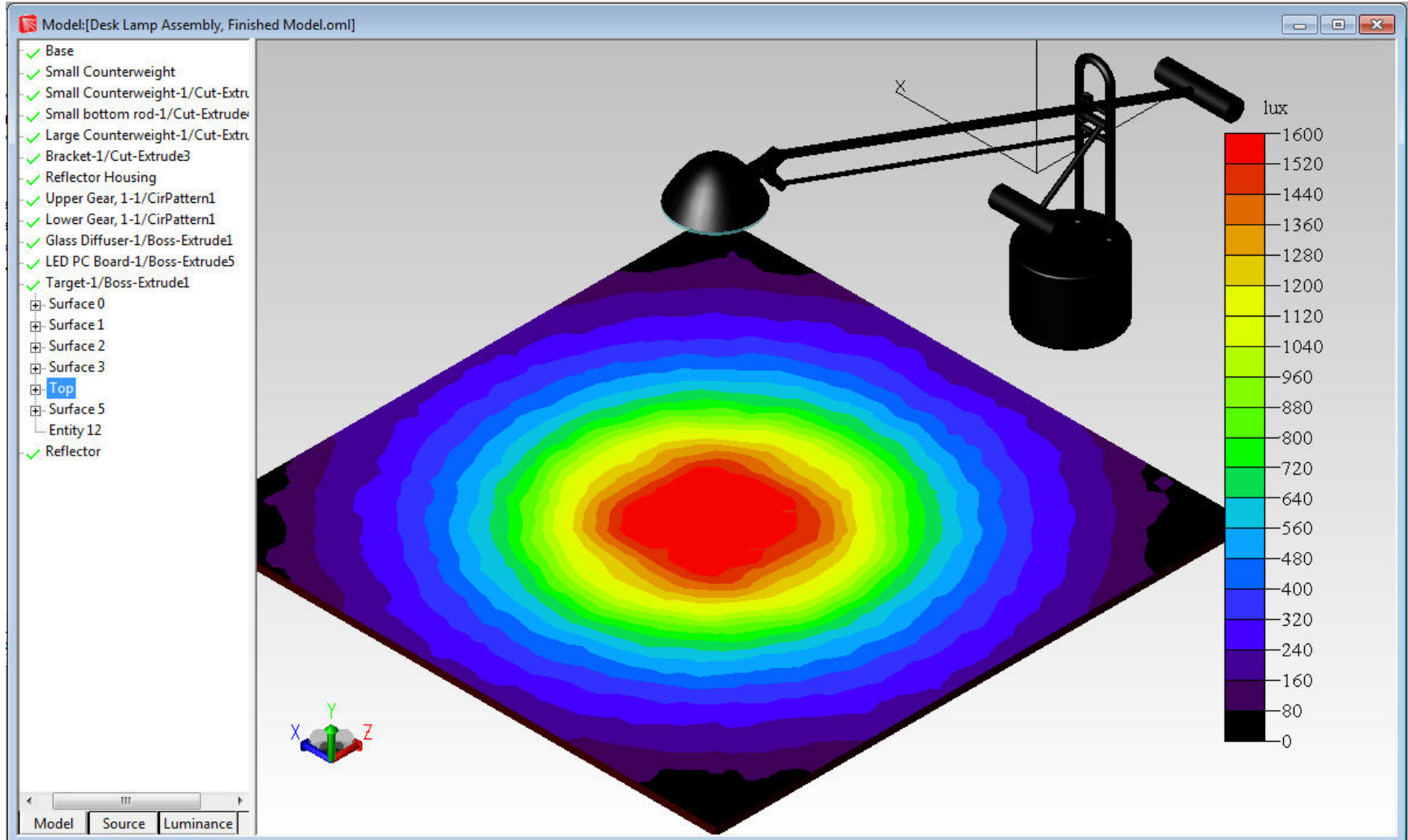
A Back-to-Basics TracePro Webinar

July 30, 2014

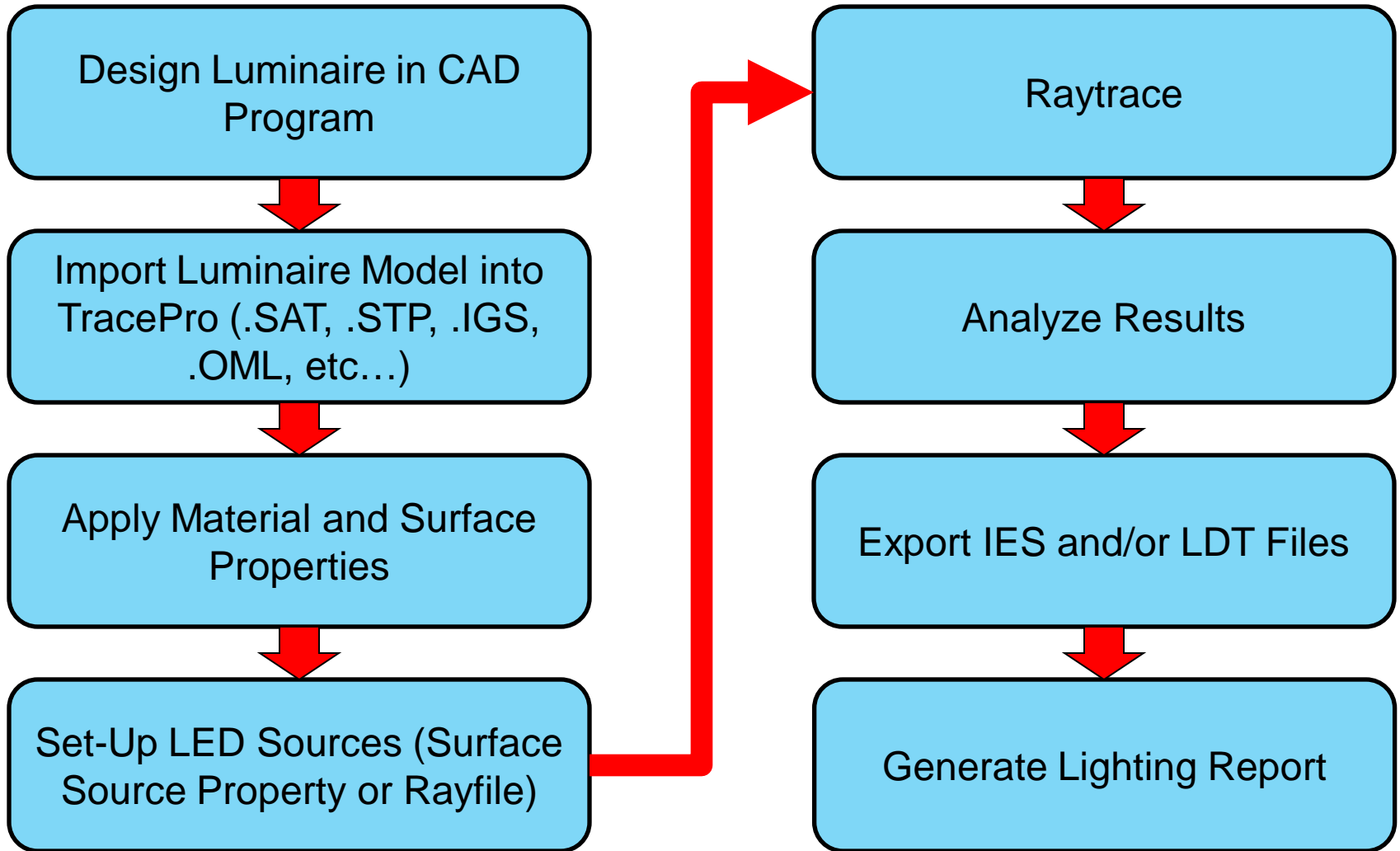
Agenda

- Import a luminaire model from a CAD program into TracePro
- Use the TracePro Bridge for SolidWorks to simplify the workflow
- Apply Surface and Material Properties
- Set up the LED sources using the Surface Source Property
- Run the raytrace
- Analyze the results including irradiance maps, candela plots, and IES and LDT file
- Questions and Answers

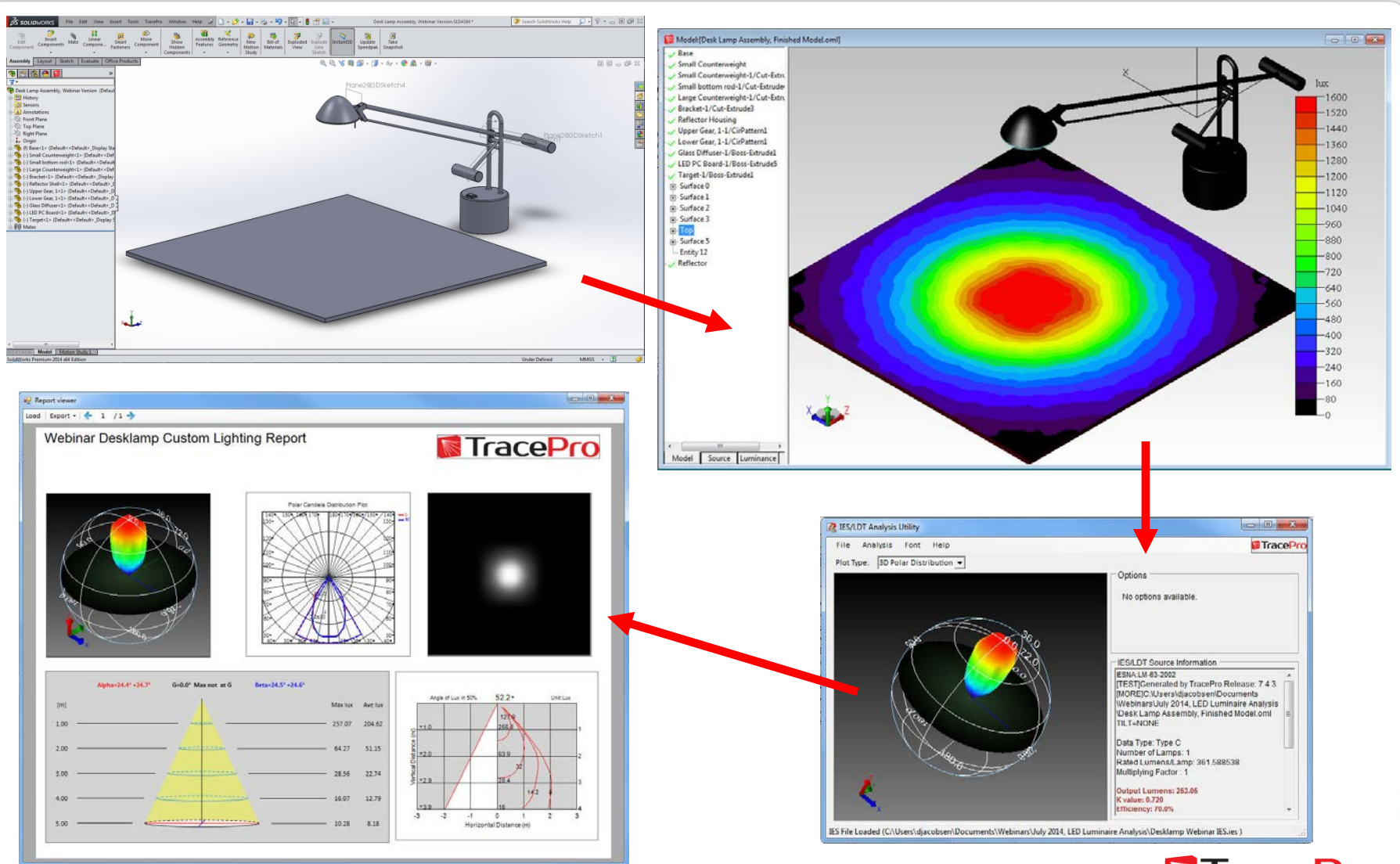
The Goal – Analyze a LED Luminaire Imported from a CAD Program



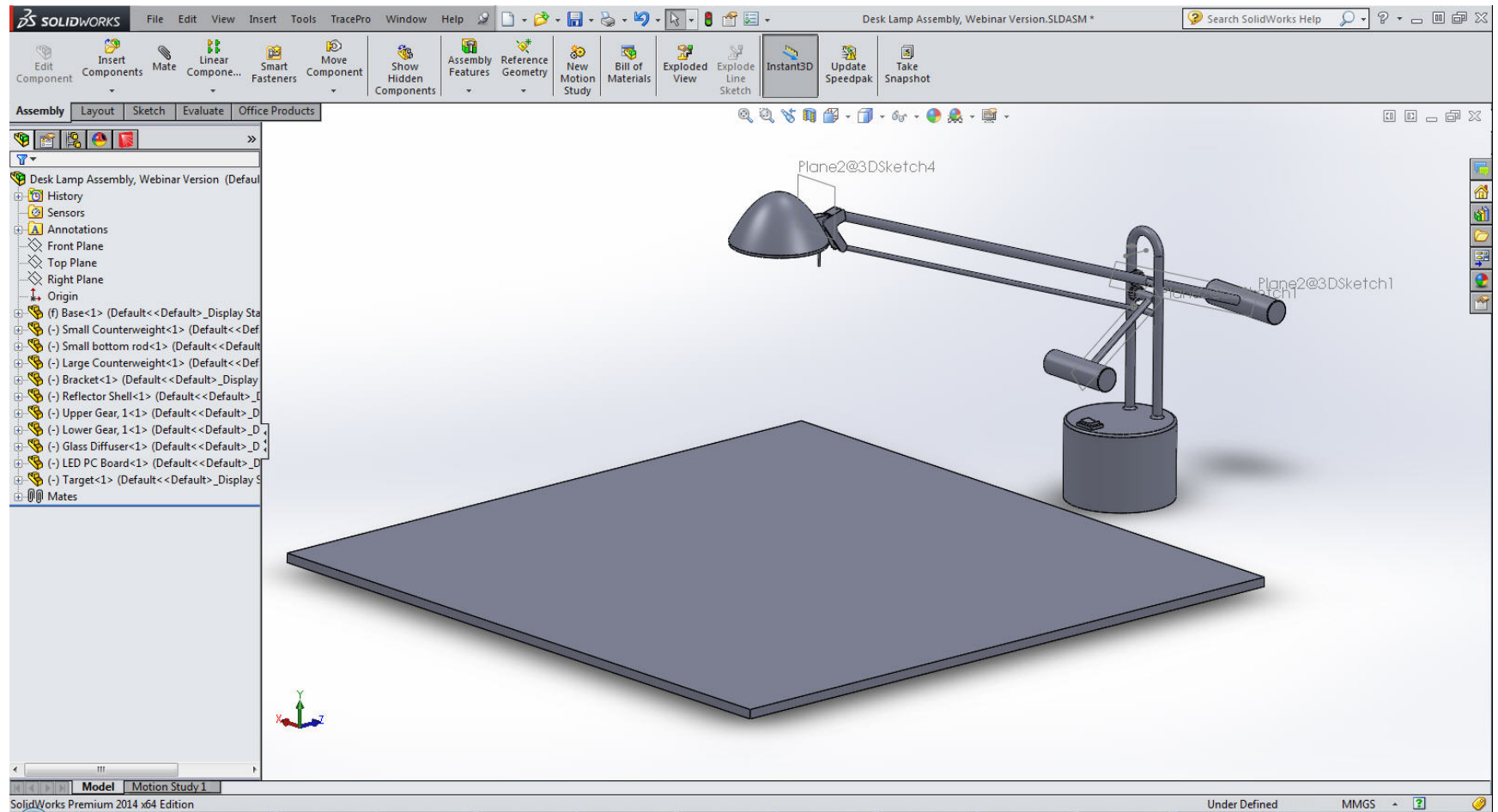
LED Luminaire Analysis Process – Typical Workflow



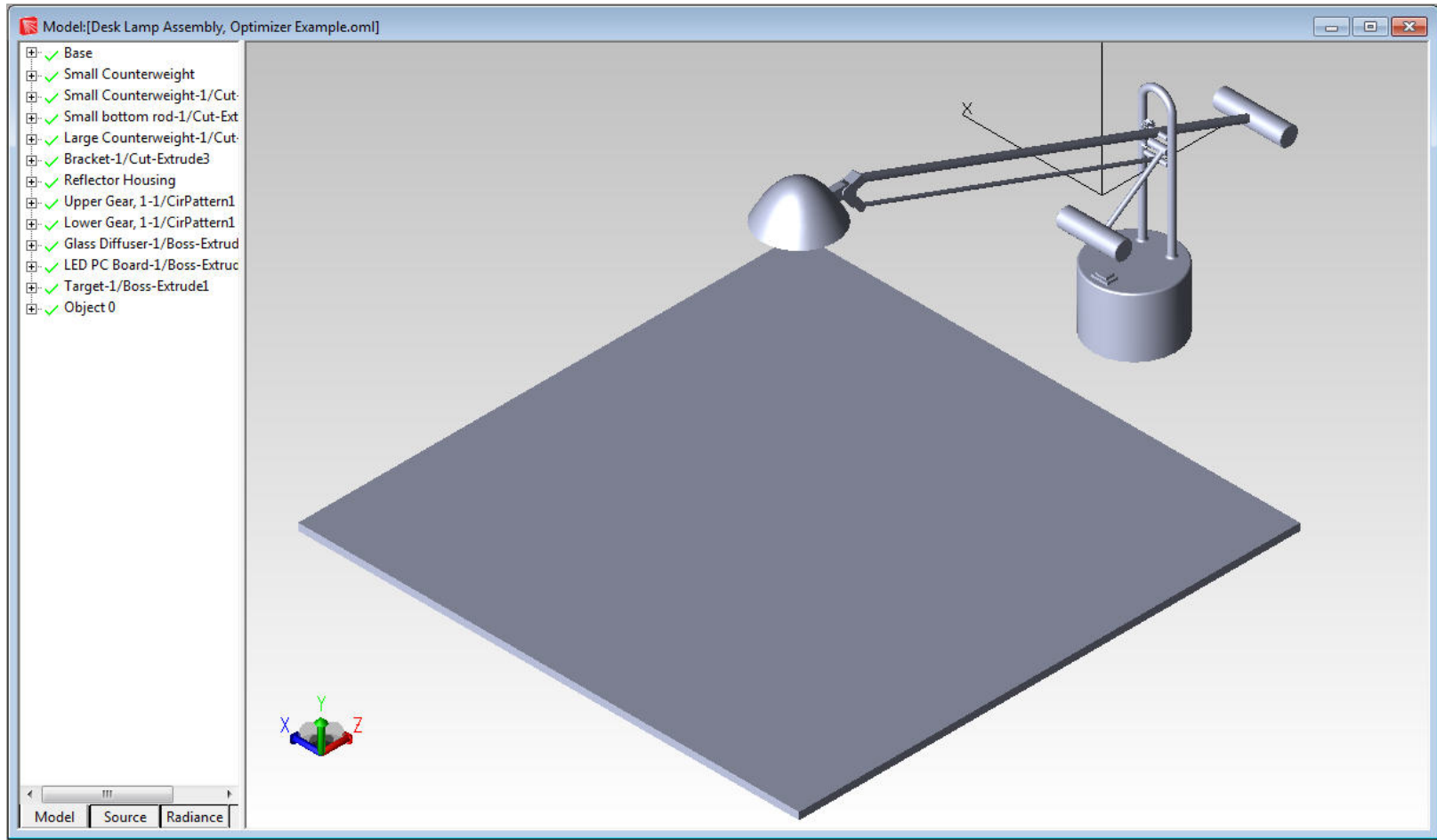
LED Luminaire Analysis Process – Typical Workflow



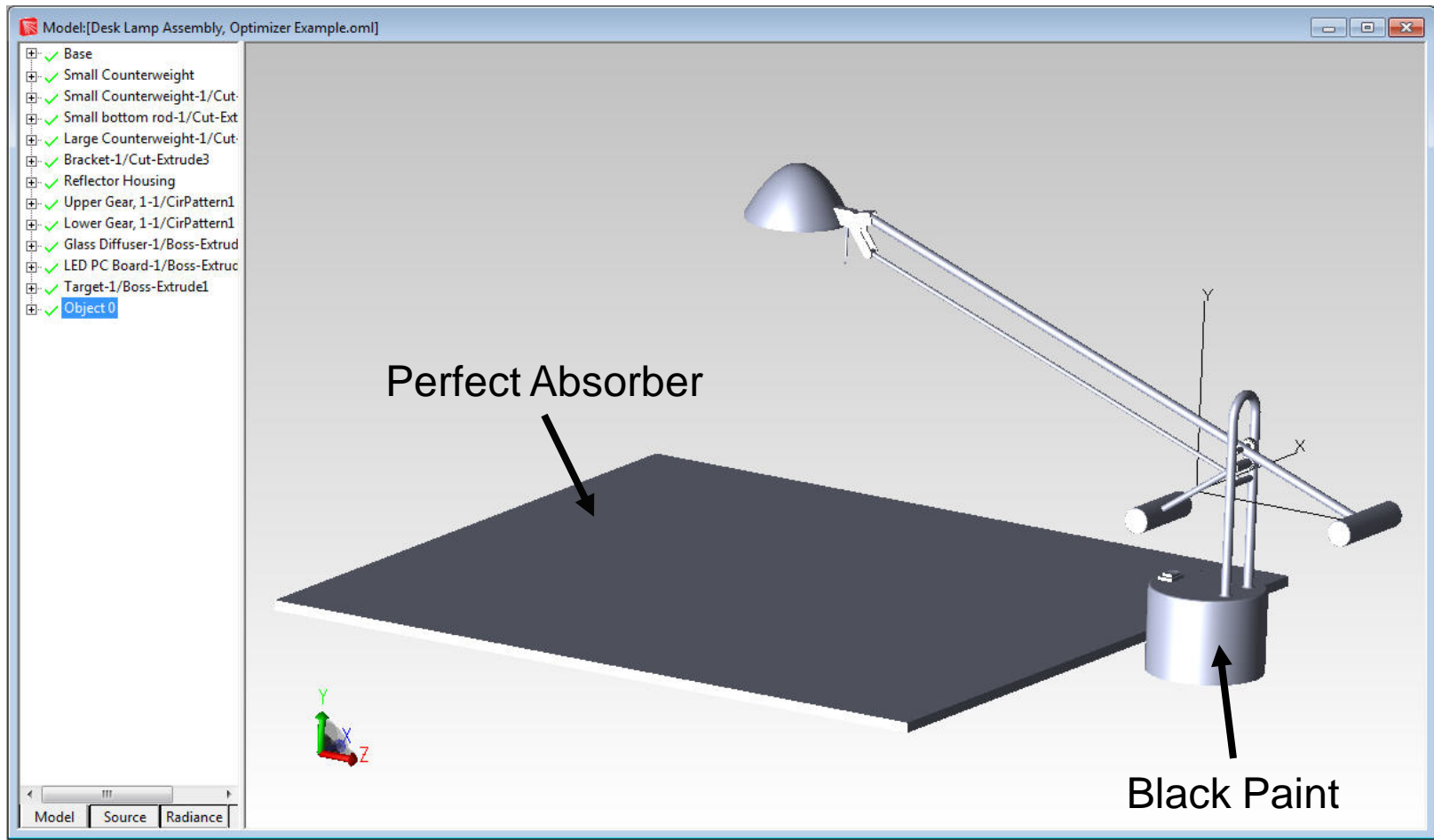
CAD Model



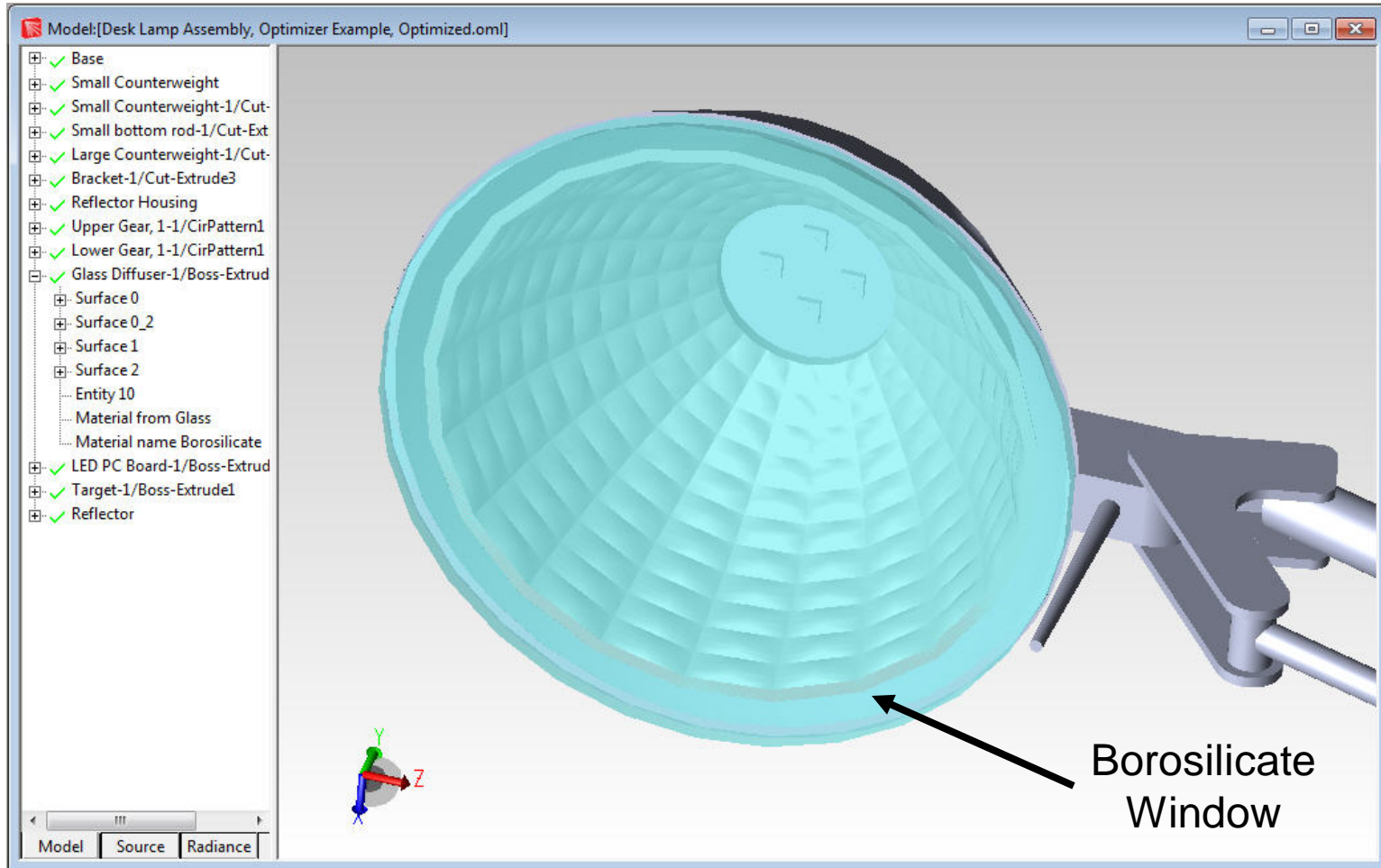
CAD Model Imported into TracePro



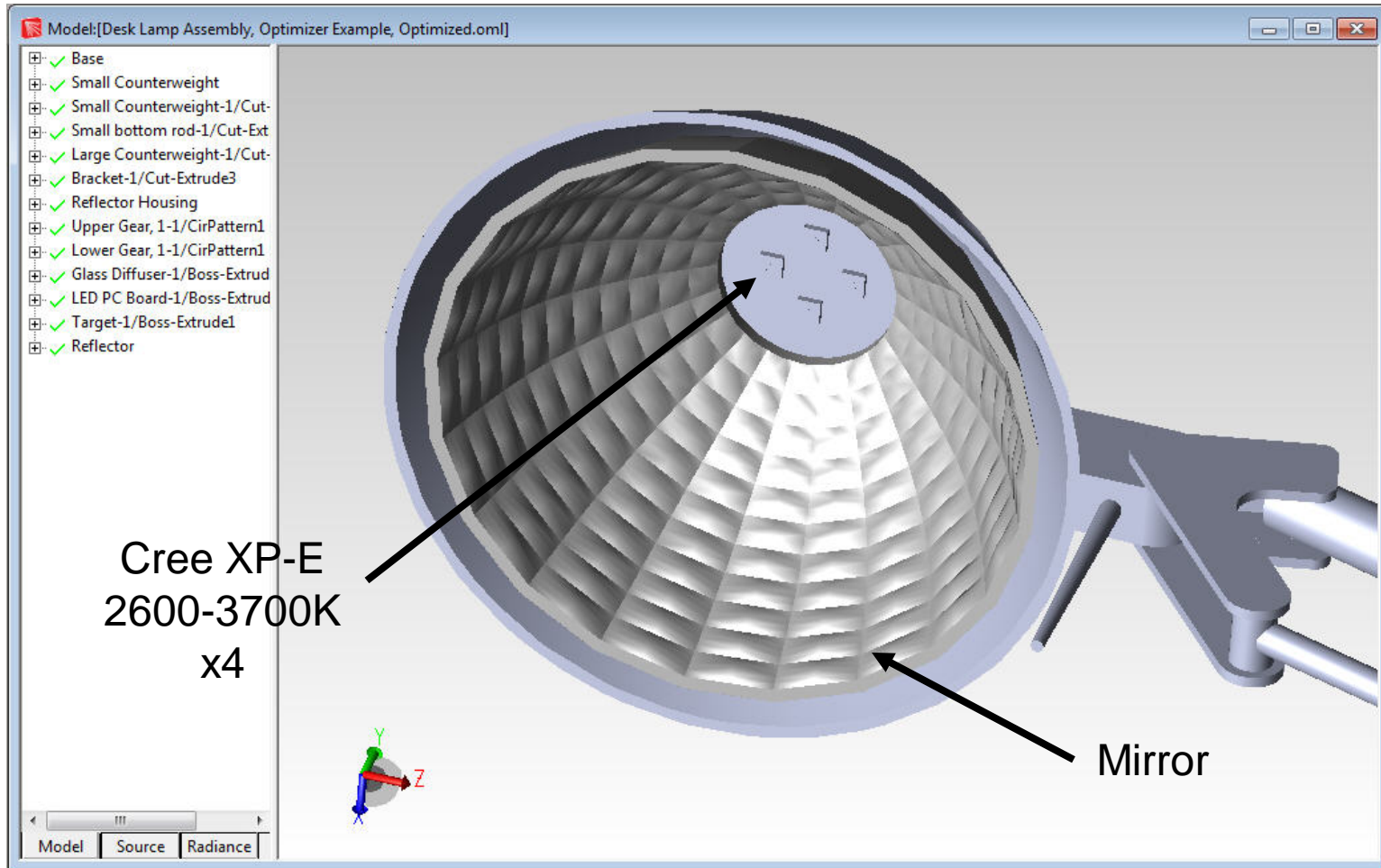
Model Properties



Model Properties



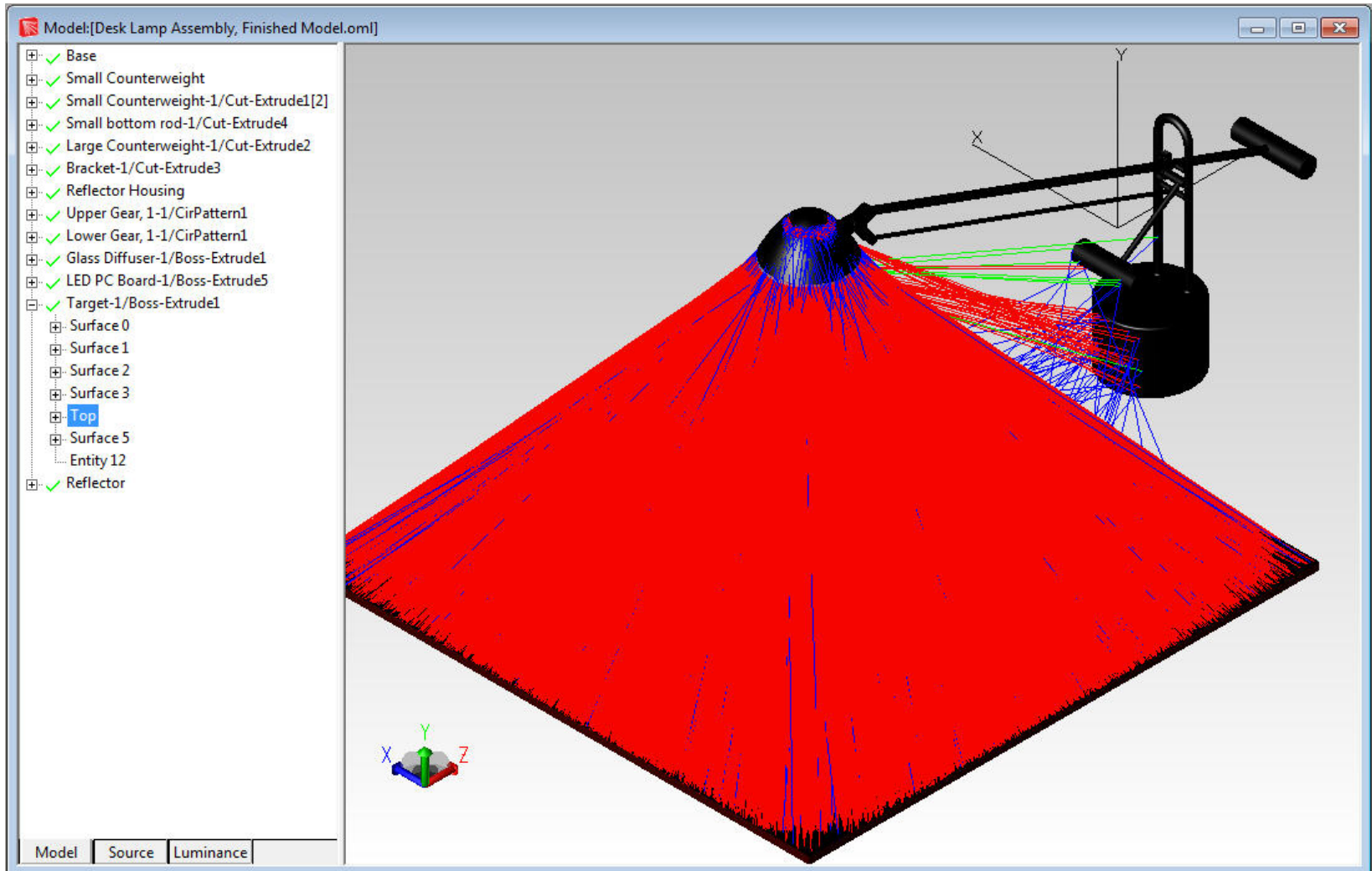
Model Properties



LED Luminaire Analysis

Live Demonstration

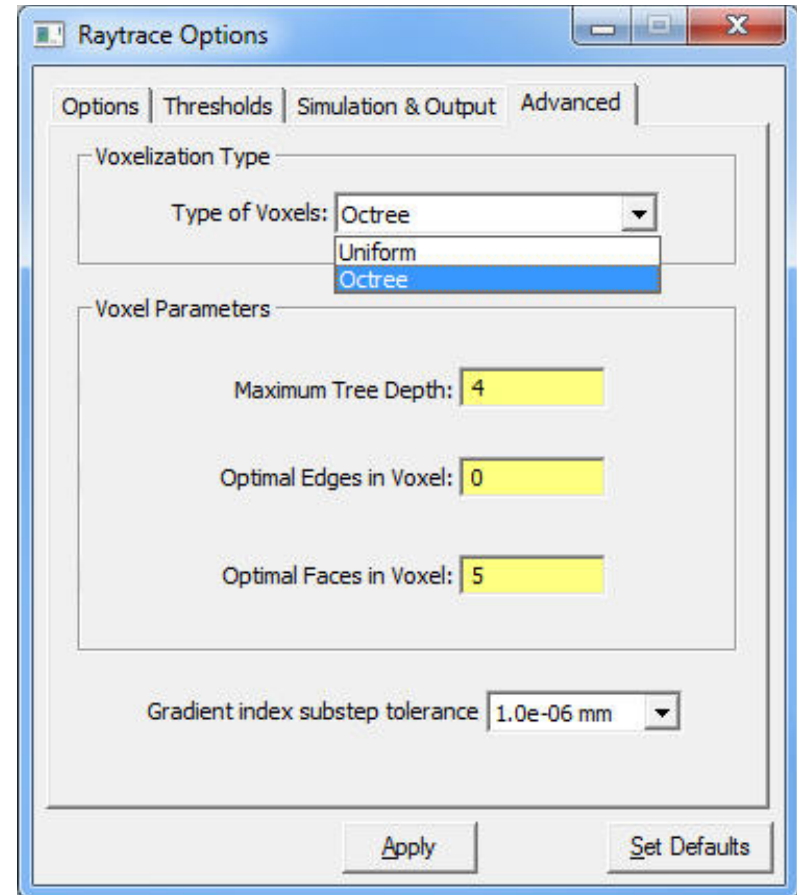
Review of Results



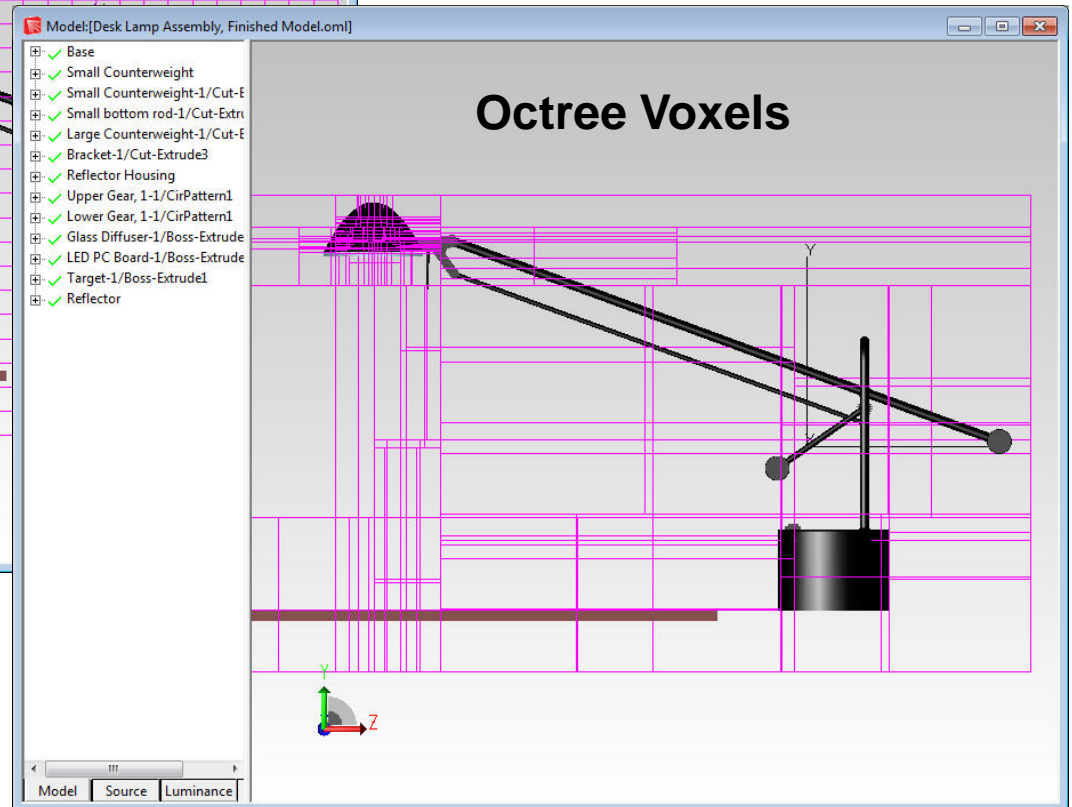
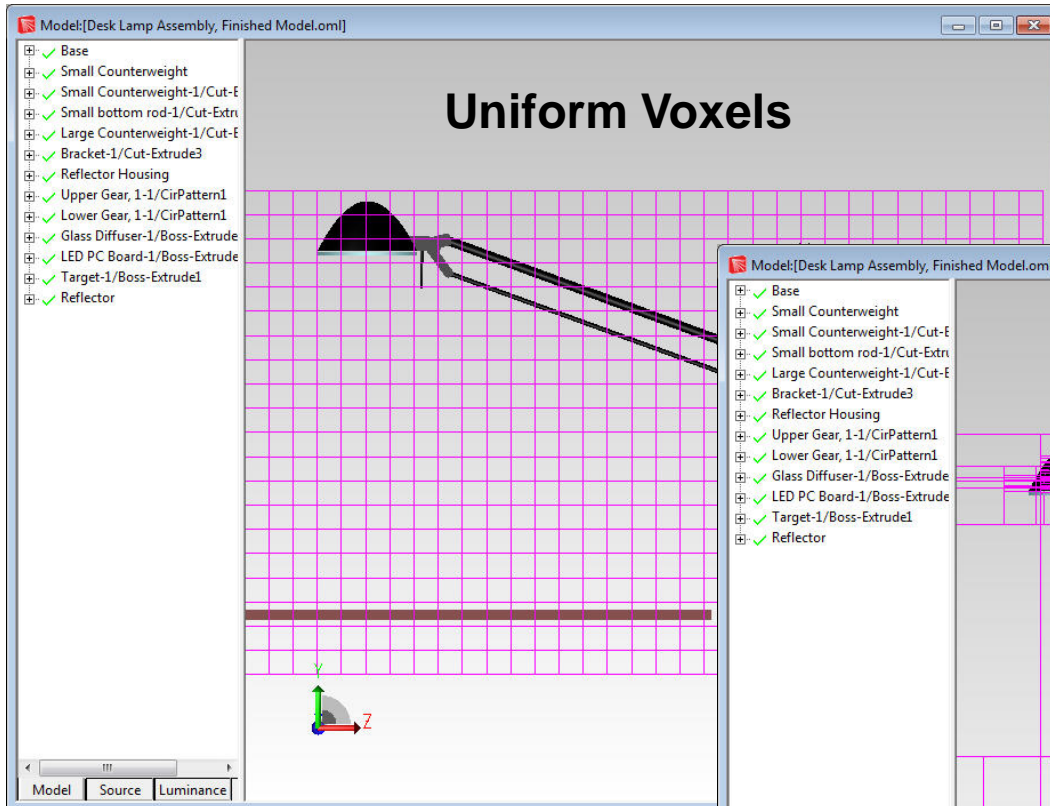
Voxel Settings and Raytrace Times

- 2 million rays traced
 - Uniform Voxels – 31 minutes
 - Octree Voxels – 6 minutes
- 4 million rays traced
 - Uniform Voxels – 60 minutes
 - Octree Voxels – 12 minutes

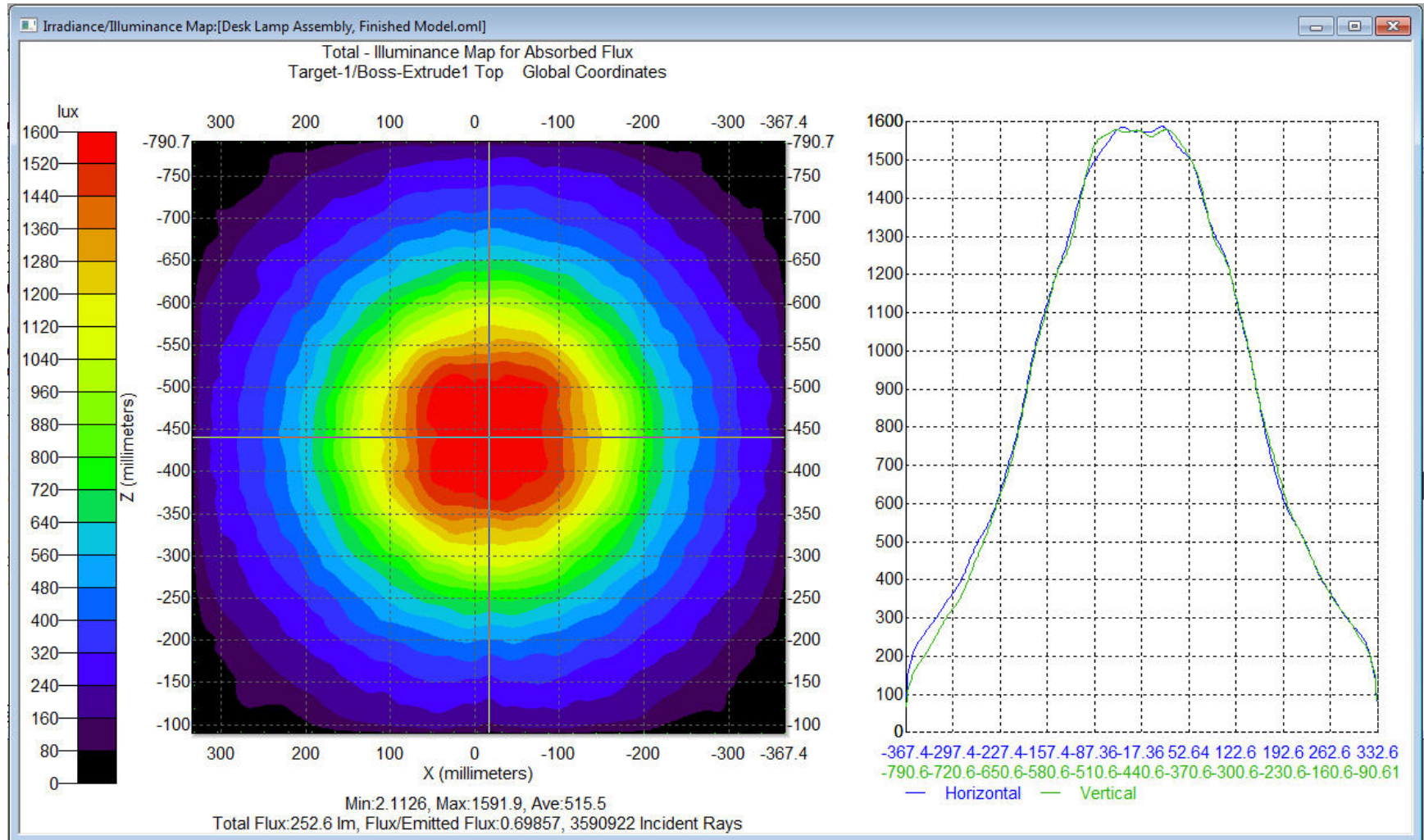
If there is “empty” space in the model, using the Octree voxel setting can decrease raytrace time



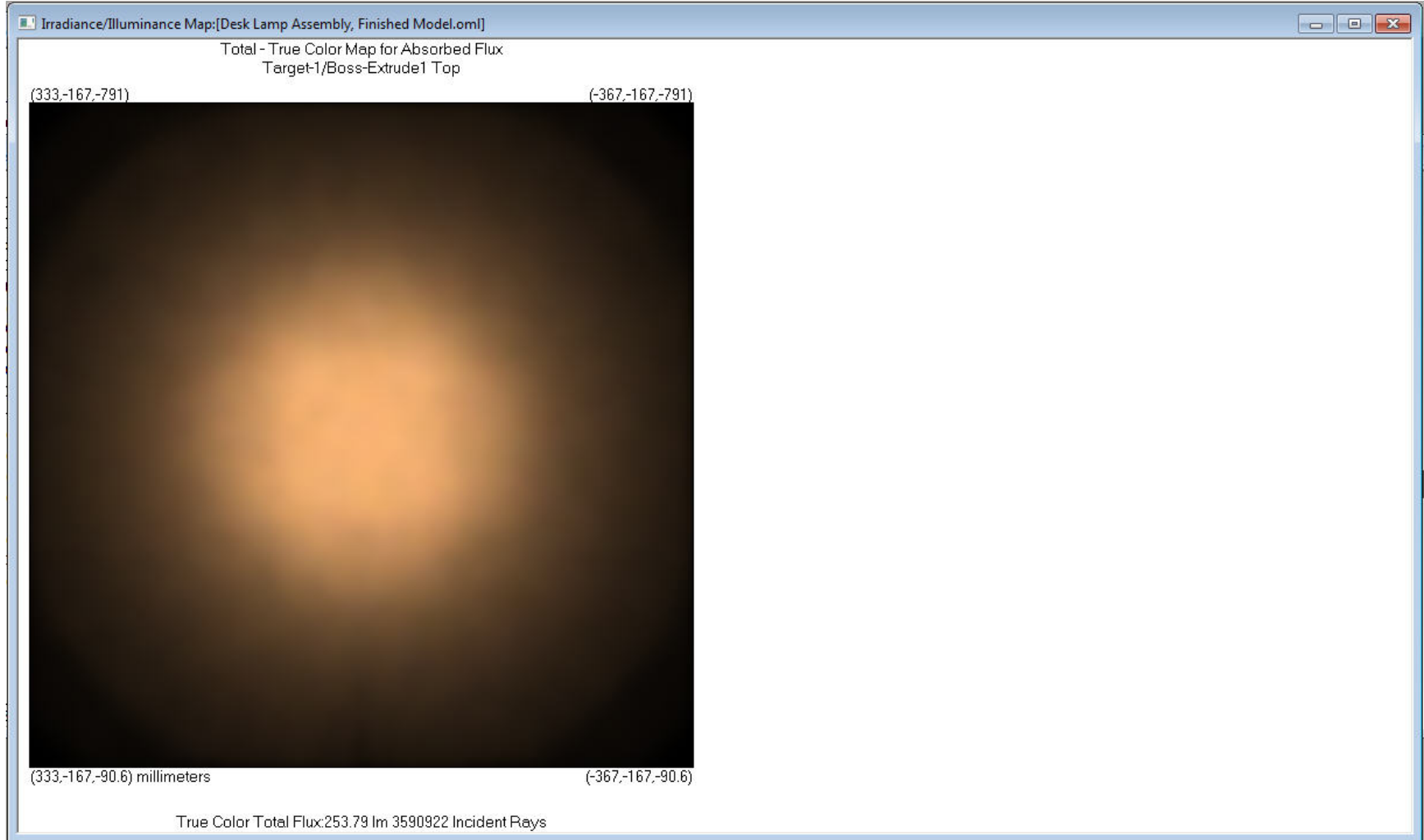
Voxel Settings and Raytrace Times



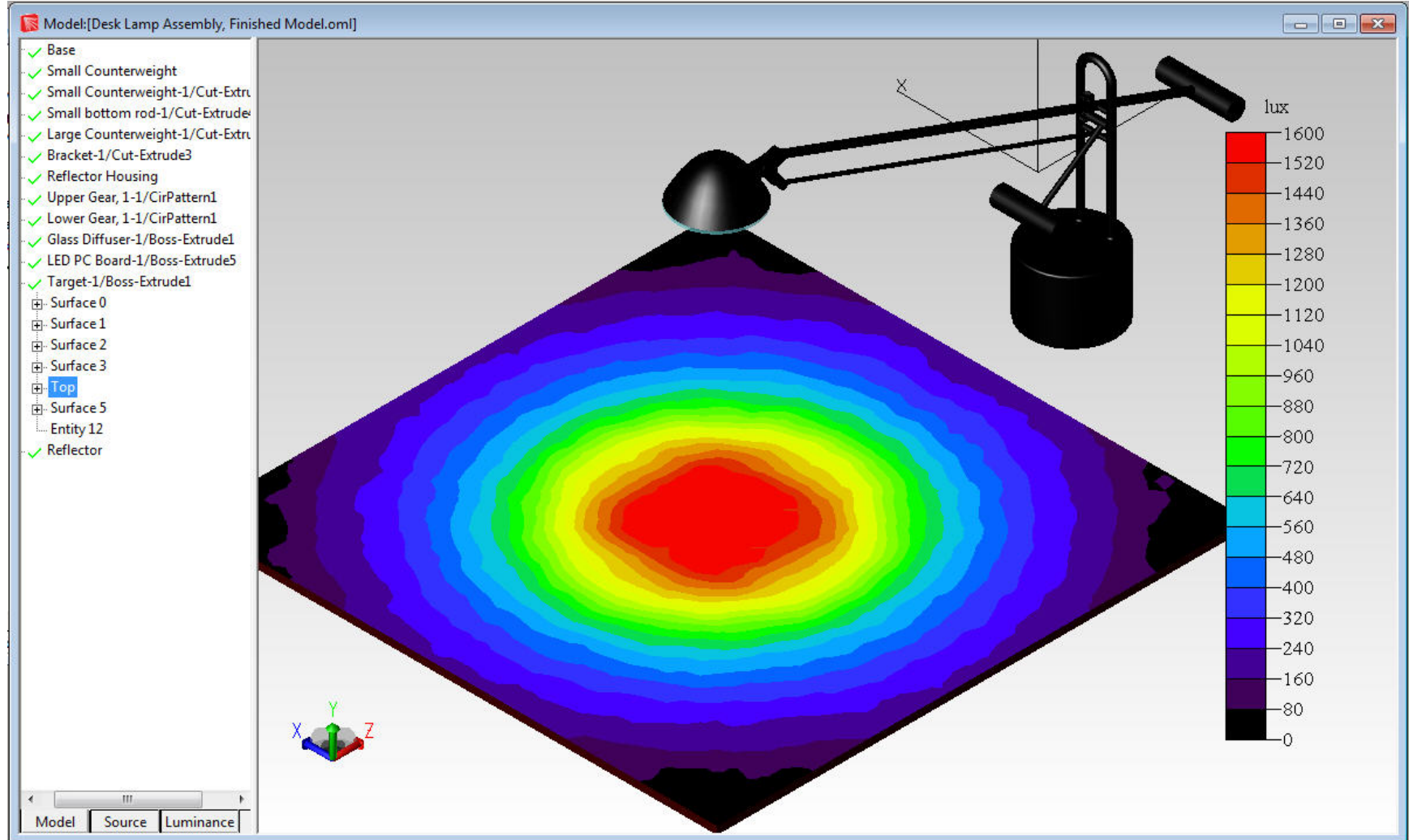
Review of Results – Illuminance Map



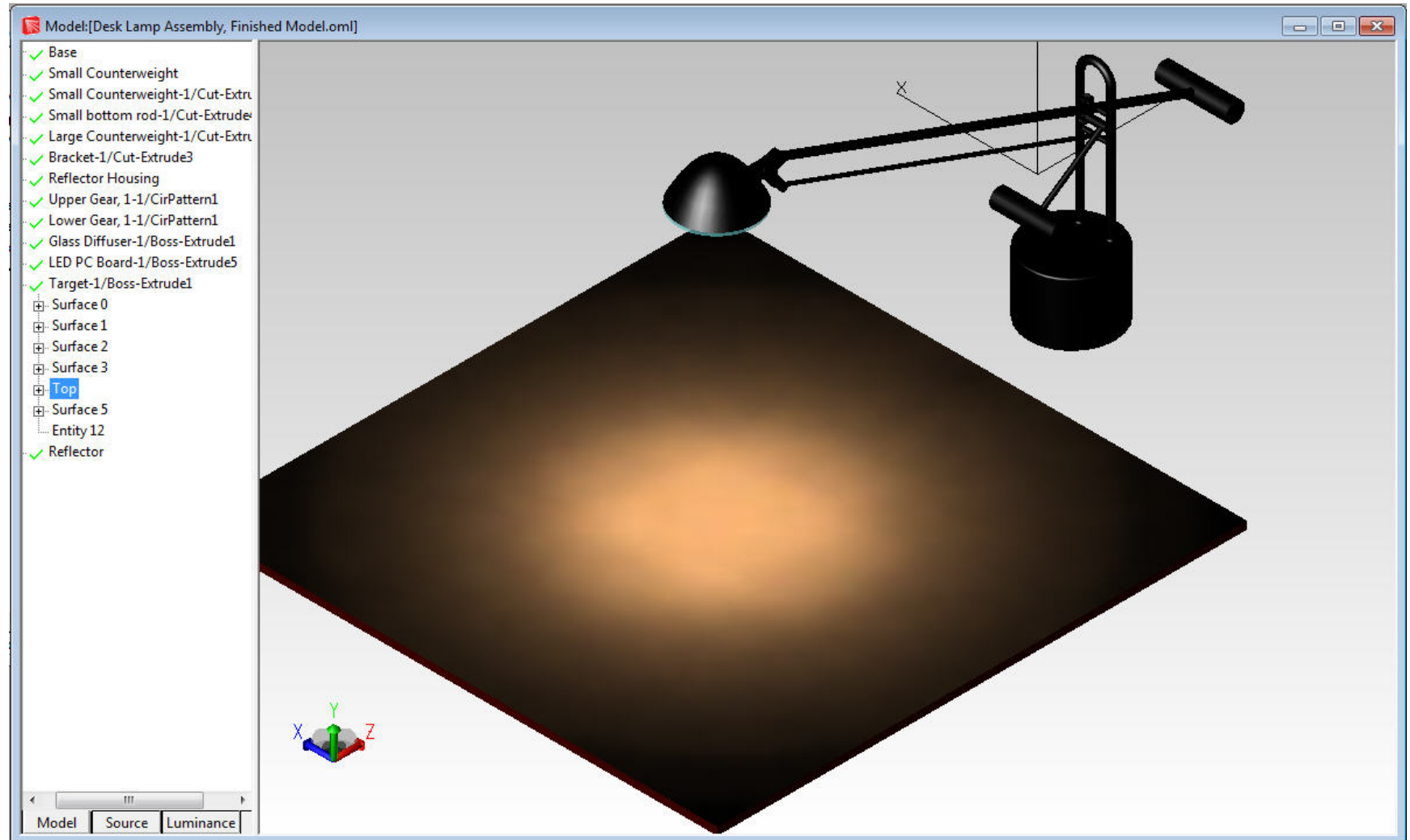
Review of Results – Illuminance Map TrueColor



Review of Results – 3D Illuminance Map



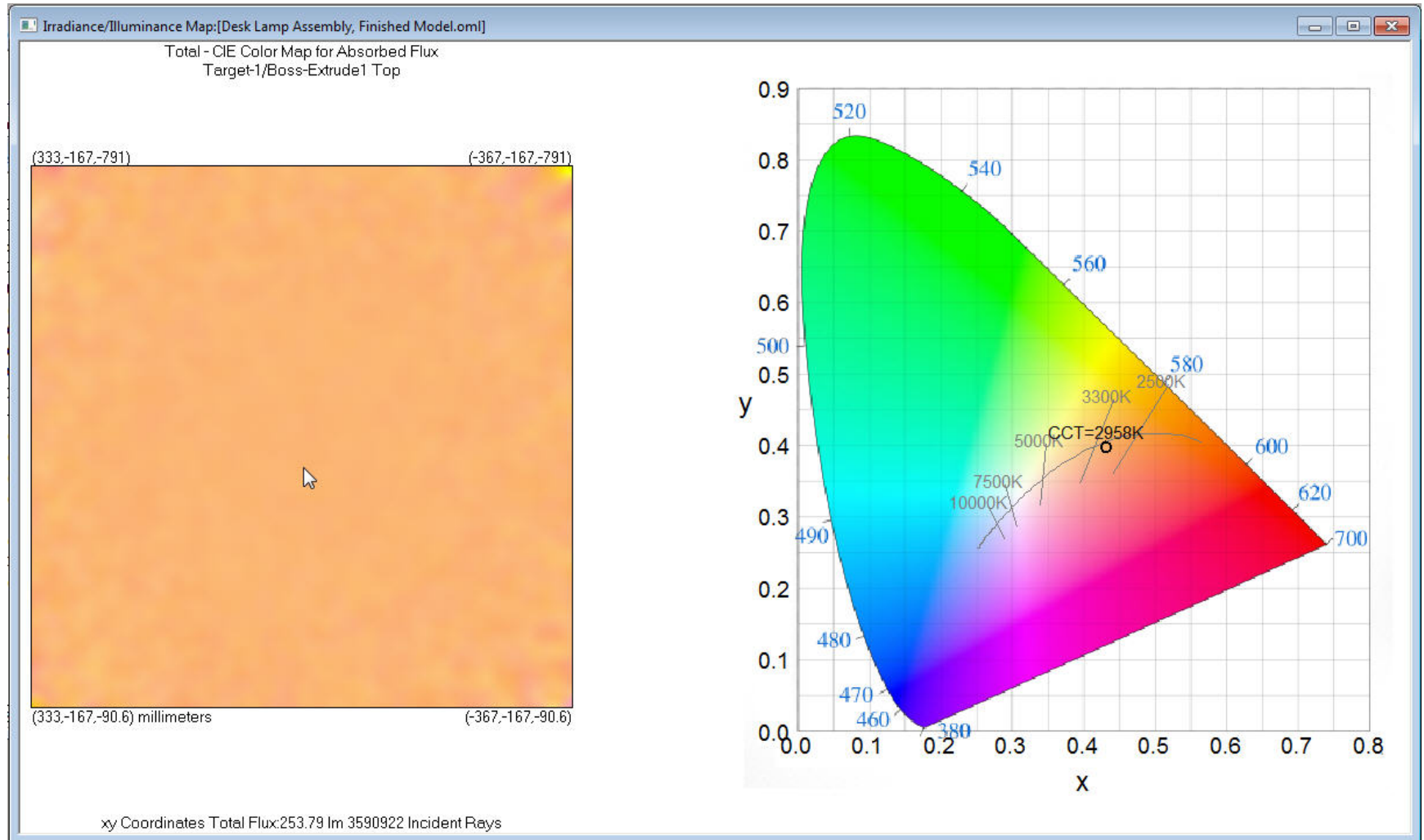
Review of Results – 3D Illuminance Map TrueColor



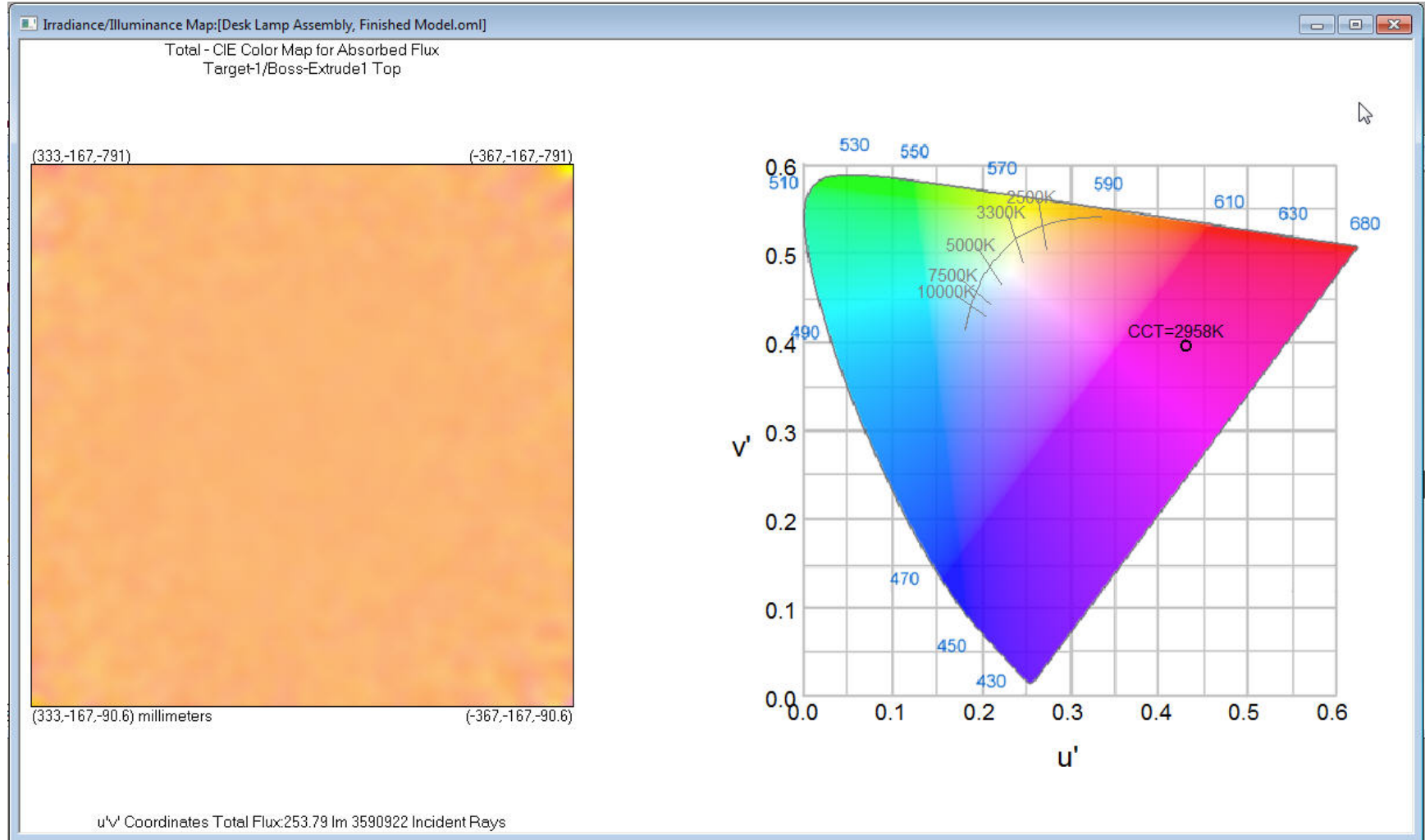
Review of Results – Photorealistic Rendering



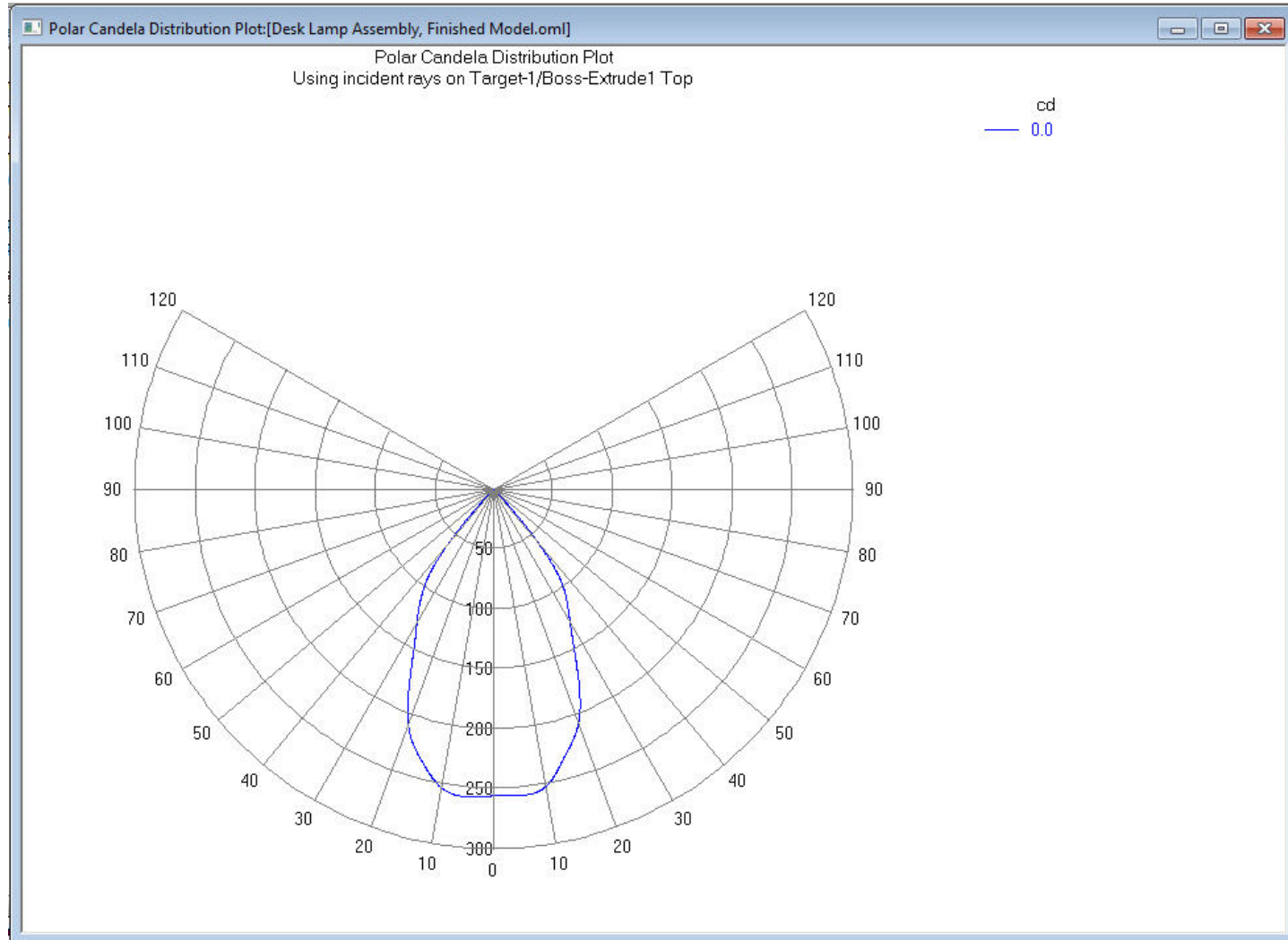
Review of Results – Illuminance Map CIE XY and CCT



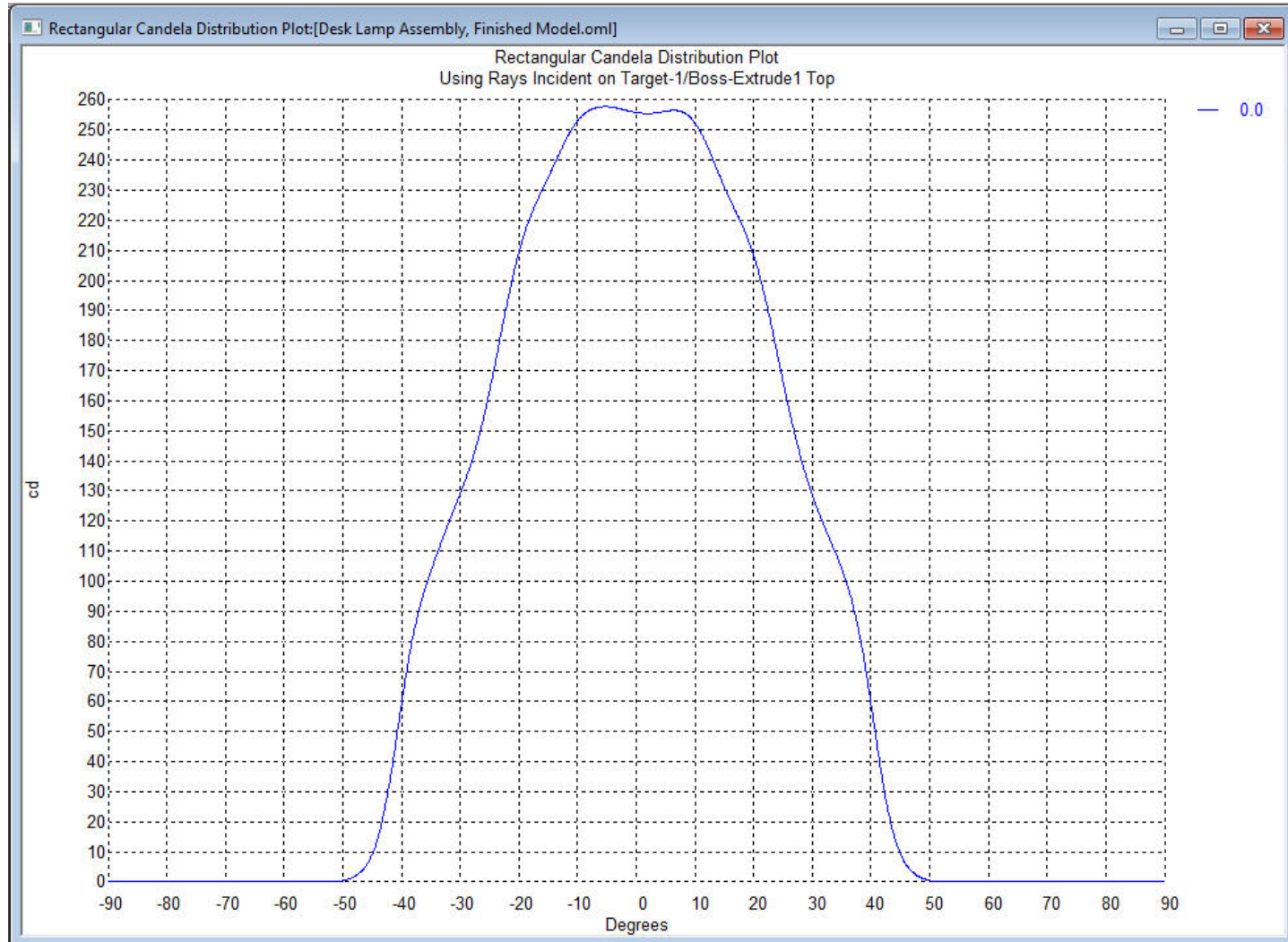
Review of Results – Illuminance Map CIE U'V' and CCT



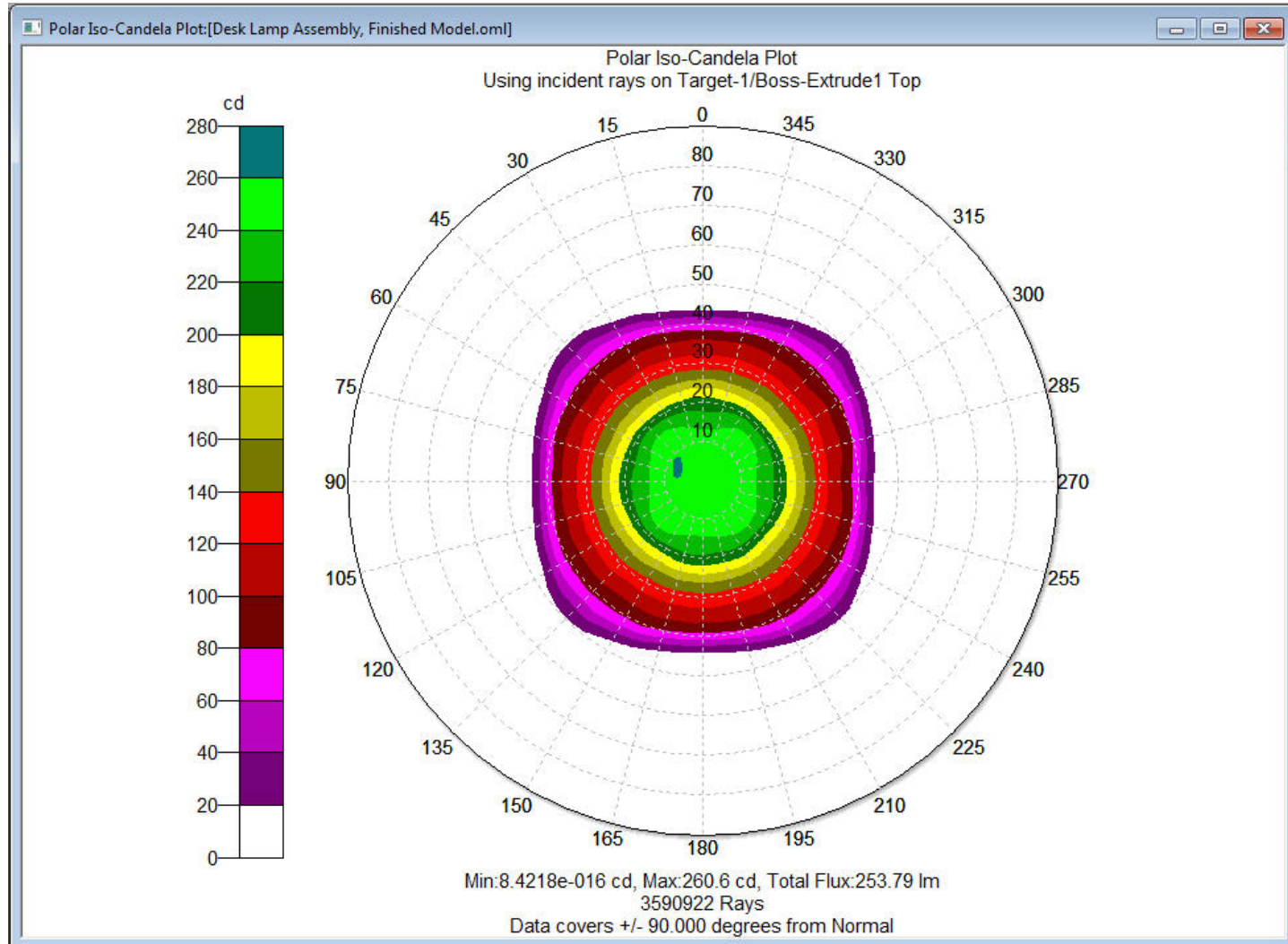
Review of Results – Polar Candela Distribution



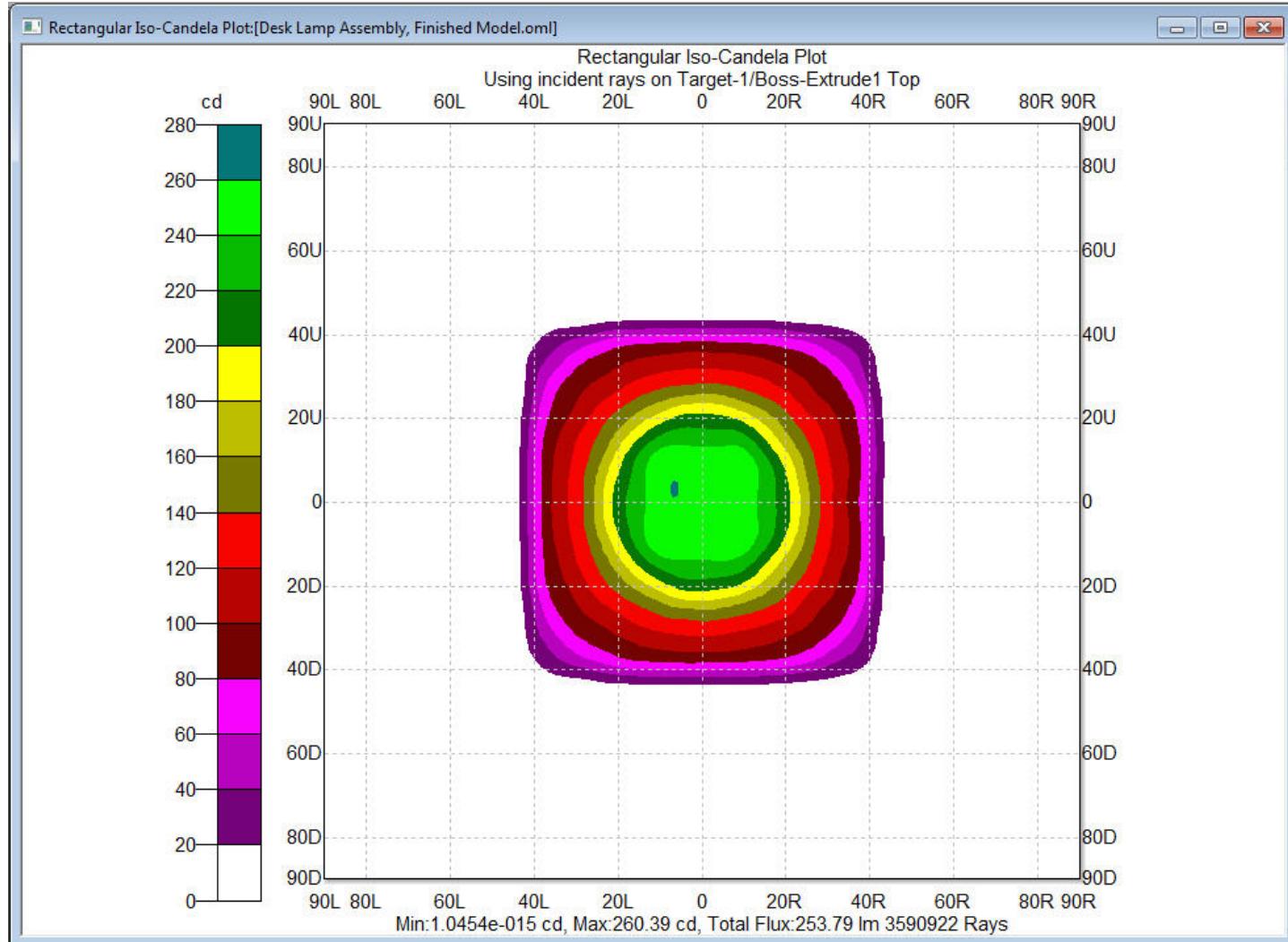
Review of Results – Rectangular Candela Distribution



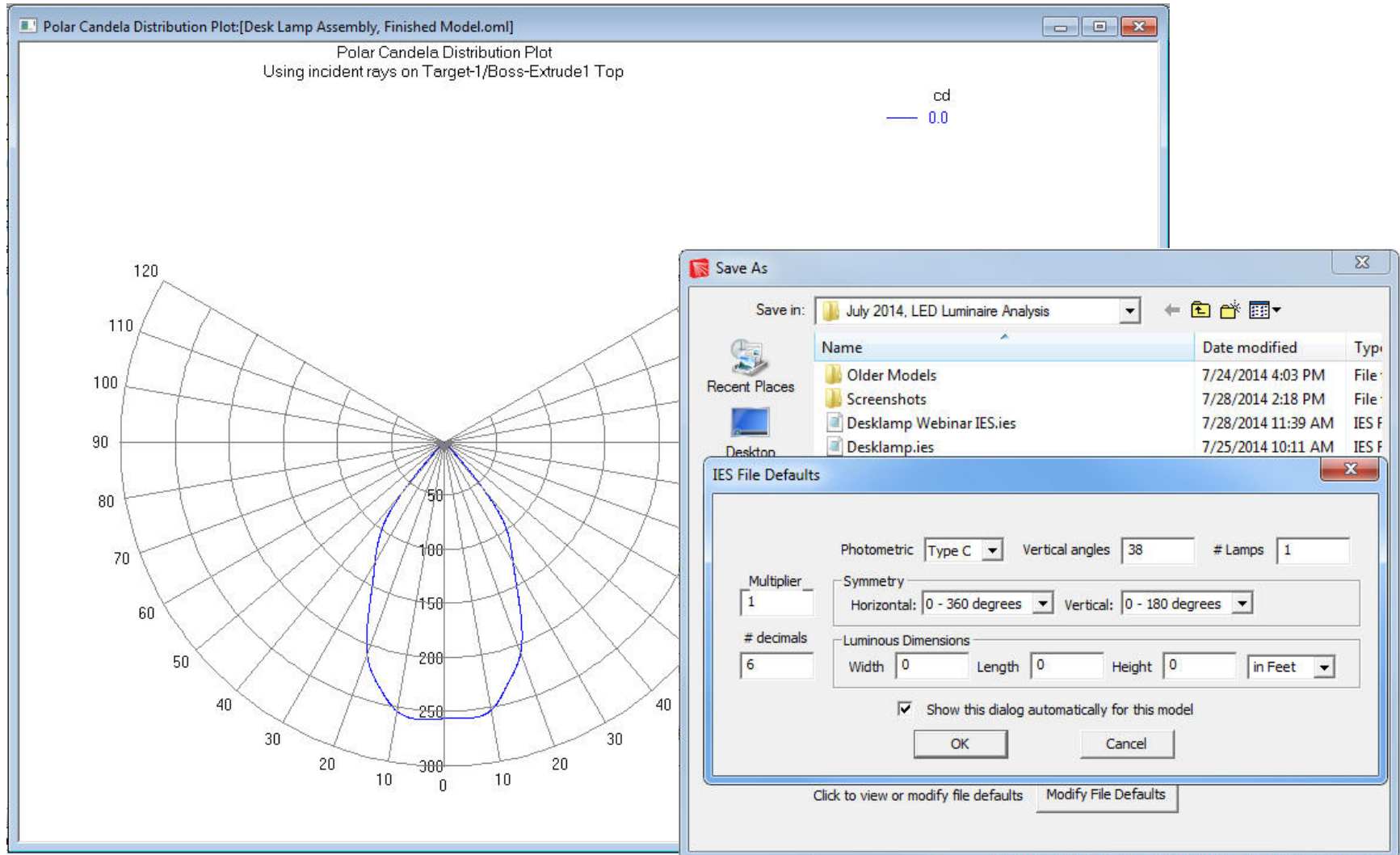
Review of Results – Polar Iso-Candela



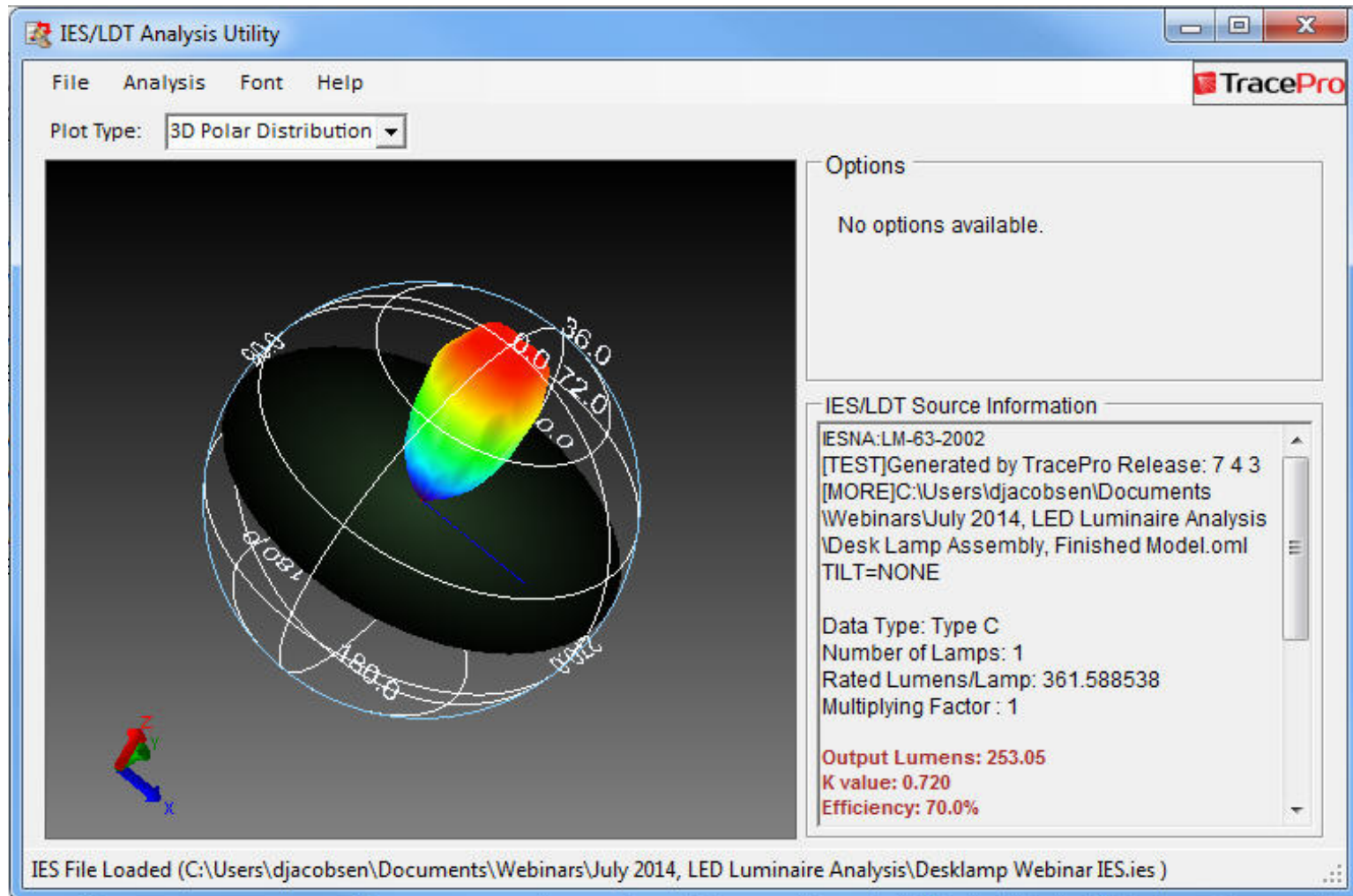
Review of Results – Rectangular Iso-Candela



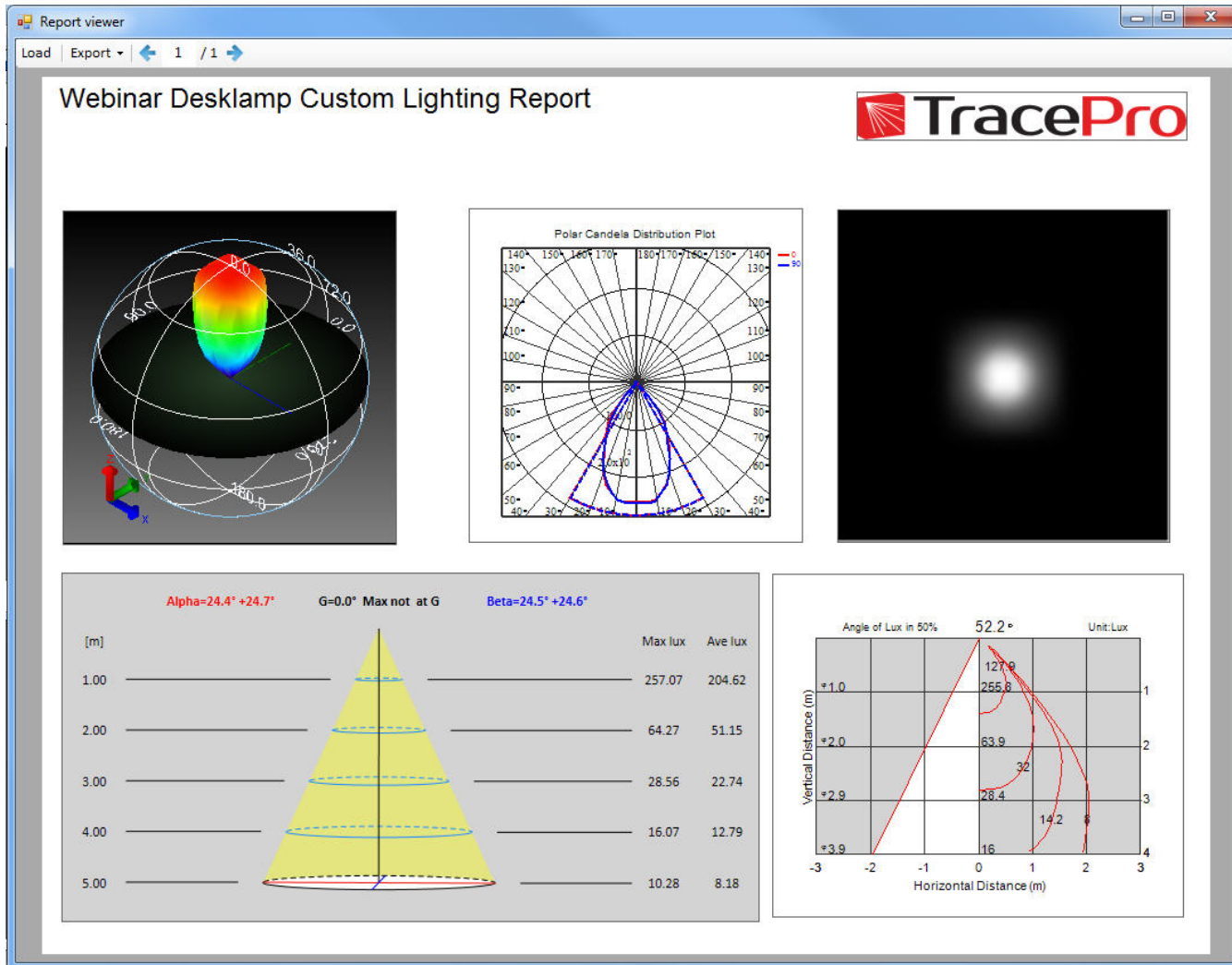
Review of Results – Saving IES File



Review of Results – IES/LDT Analysis Utility



Review of Results – Custom Lighting Report



Summary and Questions

TracePro streamlines the luminaire analysis process and accelerates product time to market with:

- ✓ The ability to import models in multiple CAD formats as well as the TracePro Bridge for SolidWorks
- ✓ Superior raytracing performance
- ✓ Tools and utilities optimized for the lighting and luminaire designer
- ✓ Powerful 2D and 3D optimization capabilities
- ✓ Comprehensive visualization and analysis tools

For more information or to sign up for our free 30-day trial please visit us at:

www.lambdares.com

Phone: 978-486-0766

E-mail: sales@lambdares.com