

How to use the new TracePro IES/LDT and Candela Analysis Utility for general, roadway and luminaire classification

Presented by :

Lambda Research Corporation
25 Porter Rd.
Littleton, MA 01460



Copyright @Lambda Research
Corporation 2013, All Rights Reserved





Moderators:

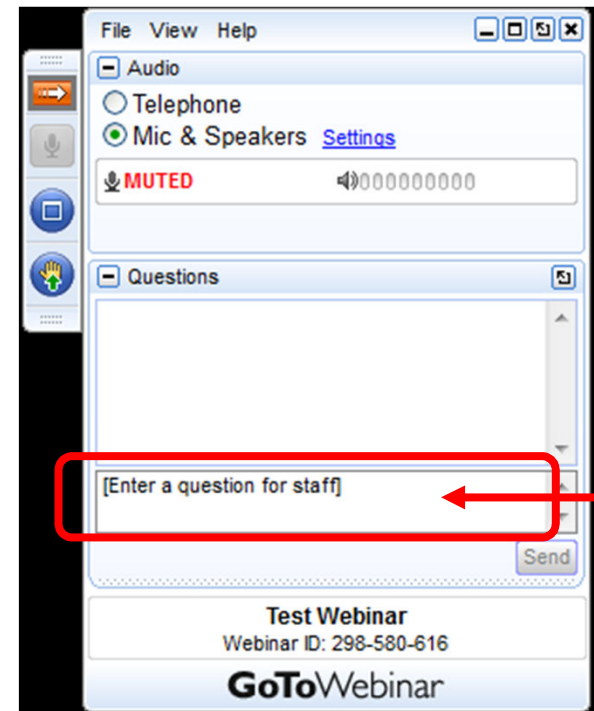
Andy Knight
Technical Sales Manager
Lambda Research Corporation

Presenter:

Michael Gauvin
Vice President of Sales
Lambda Research Corporation

Format

- A 20-25 minute presentation followed by a question and answer session
- Please submit your questions anytime using Question box in the GoToWebinar control panel



Additional Resources

- Past TracePro Webinars
 - <http://www.lambdares.com/webinars/>
- TracePro Tutorial Videos
 - <http://www.lambdares.com/videos/>
- TracePro Tutorials
 - http://www.lambdares.com/technical_support/tracepro/tutorials/
- Information on upcoming TracePro Training Classes
 - http://www.lambdares.com/technical_support/training/

Current TracePro Release

- **TracePro 7.2.6** – December 5, 2012
- **TracePro 7.3 EA** – **Currently available**

- These releases can be downloaded by anyone with a current Maintenance and Support Agreement

- www.lambdares.com

Outline

- Introduction to the New IES/LDT Candela Analysis Utility
 - How to import IES Files
 - How to export reports for general lighting, luminaires and roadway classification
 - How to exports source information in TracePro Surface Source and File Source formats
- IES/LDT Analysis Utility Overview
 - Main Window
 - File|Open Window
 - Analysis Viewer Window
- Analysis Viewer Window
 - Template Editor
 - Report Viewer



An Introduction to the New IES/LDT Analysis Utility

This new utility views IES/LDT and Candela information for lighting classification and exports reports for general, luminaire and roadway lighting systems.

The IES/LDT Analysis Utility

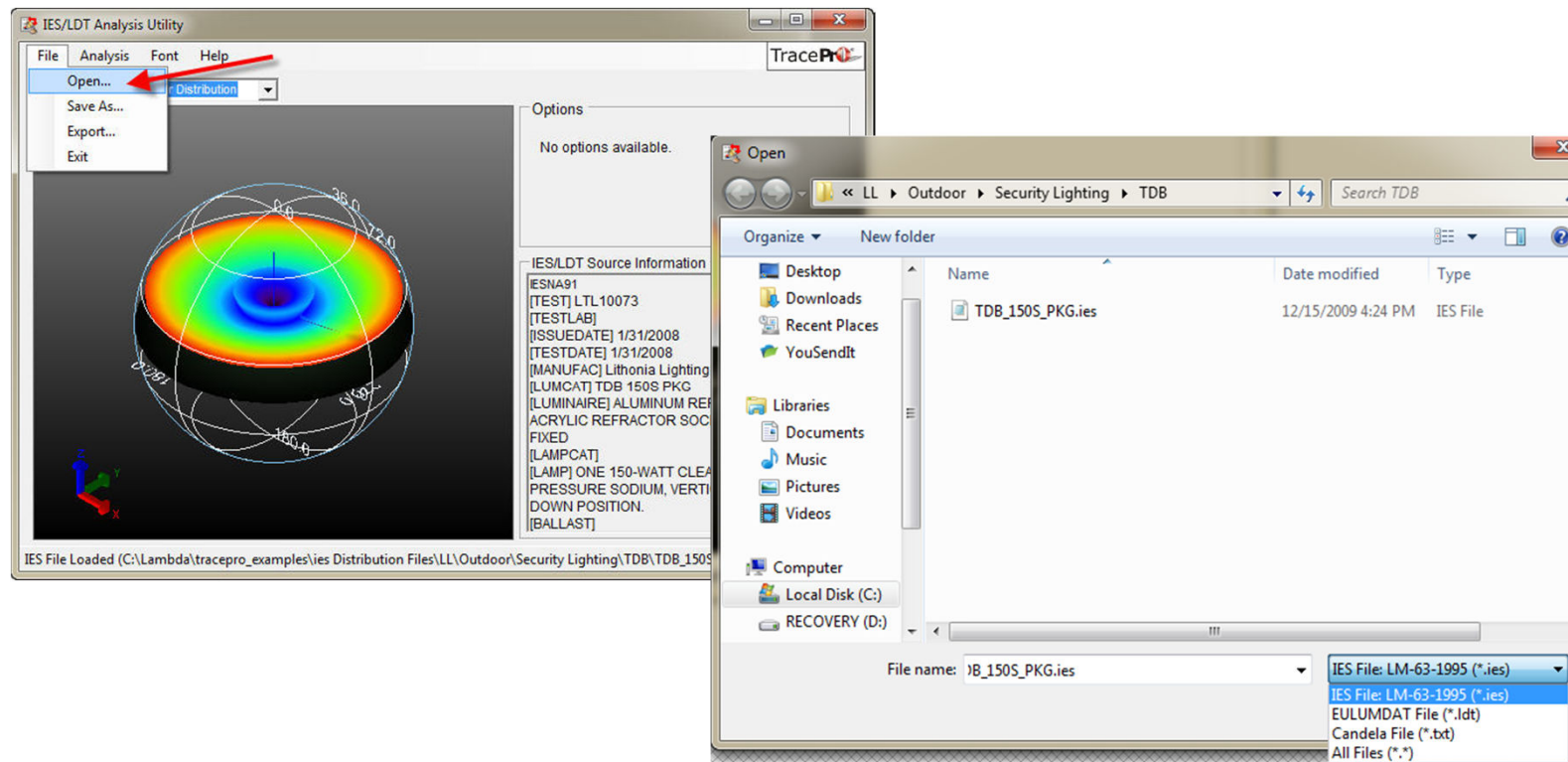
1. File Menu
 - a) Opens IES/LDT and TracePro Candela Files
 - b) Saves files to IES and LDT formats
 - c) And Export Menu to export TracePro Surface Source and File Source Properties

2. Main Window shows 5 different output results
 - a) 3D Polar Distribution Plots
 - b) Type A Goniometer Plots
 - c) Type B Goniometer Plots
 - d) Light Distribution Curve – Polar Candela Plots
 - e) Irradiance Plots

3. Analysis Menu
 - a) Template Editor
 - b) Report Viewer
 - i. Which has 3 built-in reports, labeled D1, D2 and D3

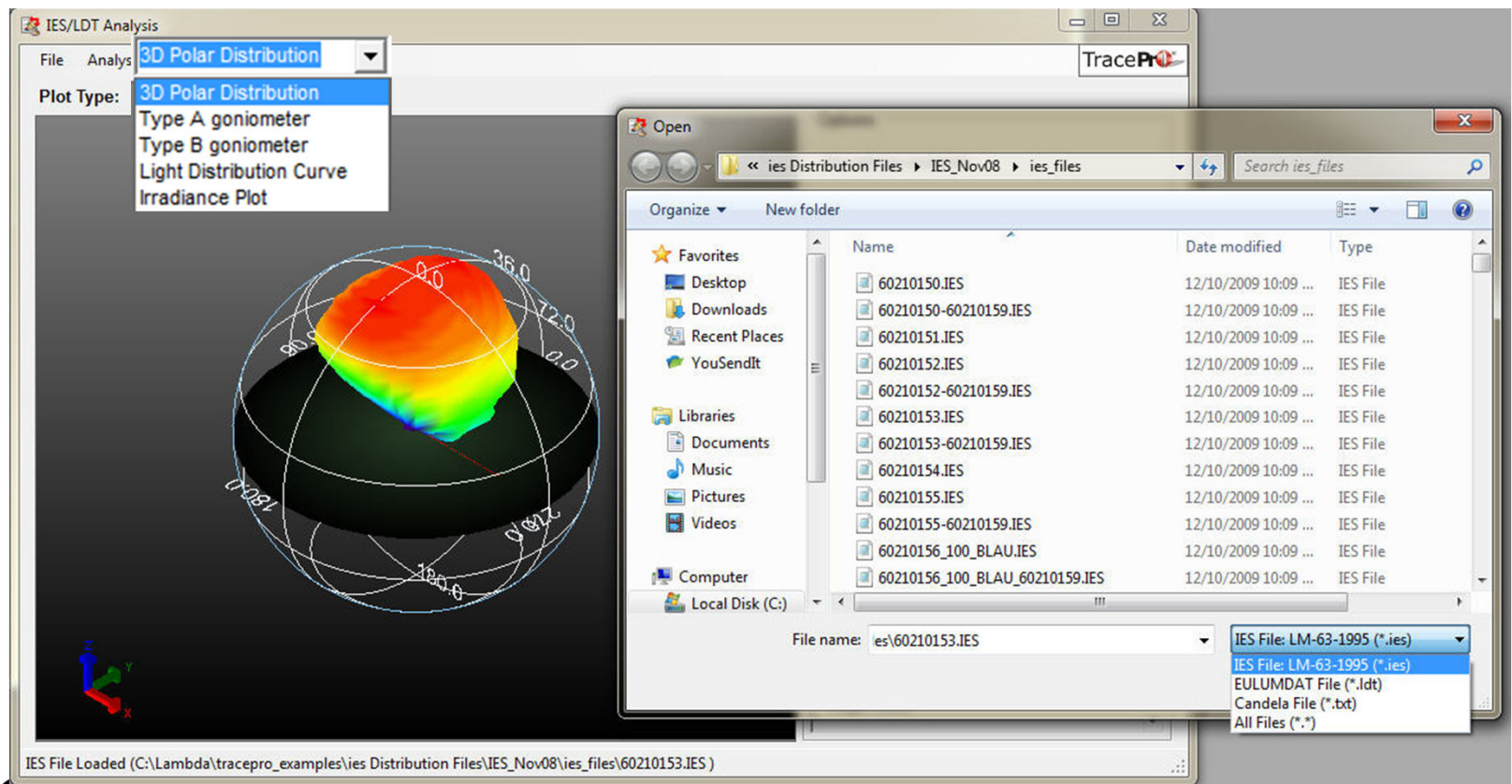
IES/LDT Analysis File Menu

The utility's File Open menu opens IES, LDT, TracePro Candela Files and a general ASCII file format for angular data retrieval.



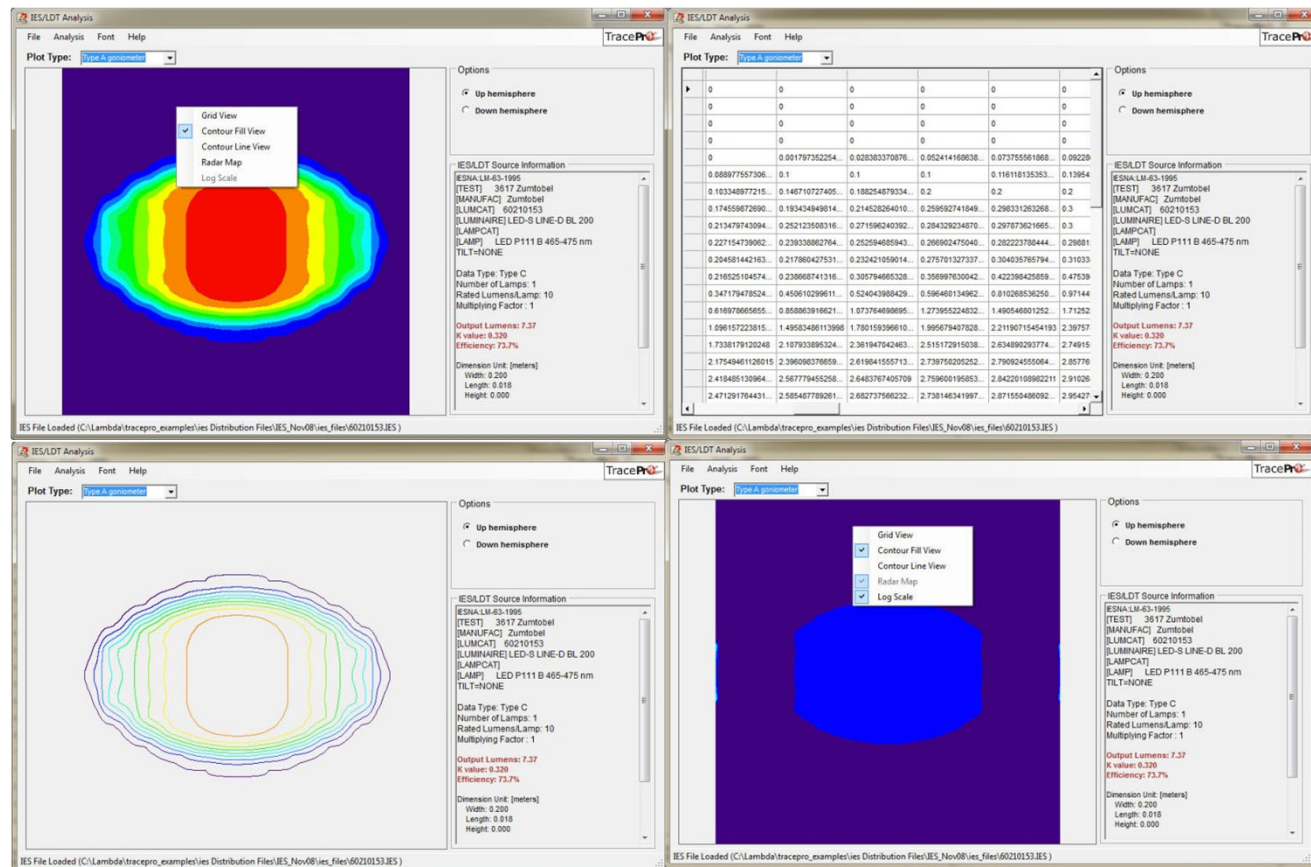
IES/LDT Analysis File Menu

After opening a file with angular data, there are 5 different plotting options including 3D Polar (shown), Type A, Type B, Light Distribution Curves or Irradiance Plots with multiple display options for each type.



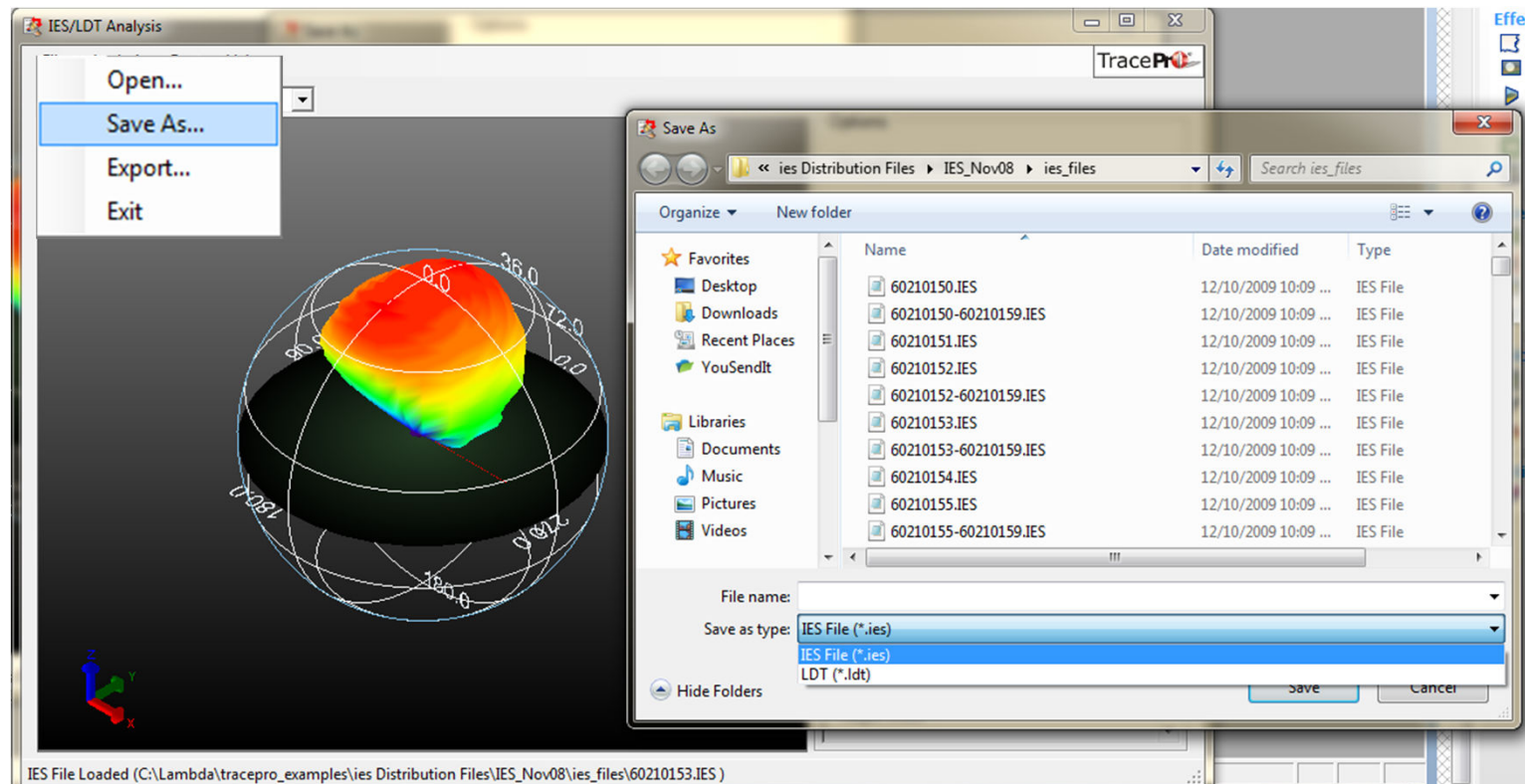
IES/LDT Analysis File Menu

Shown below is the Type A goniometer plot showing 4 of the optional formats, Contour Fill, Contour line, Log Scale plots and Grid View output.



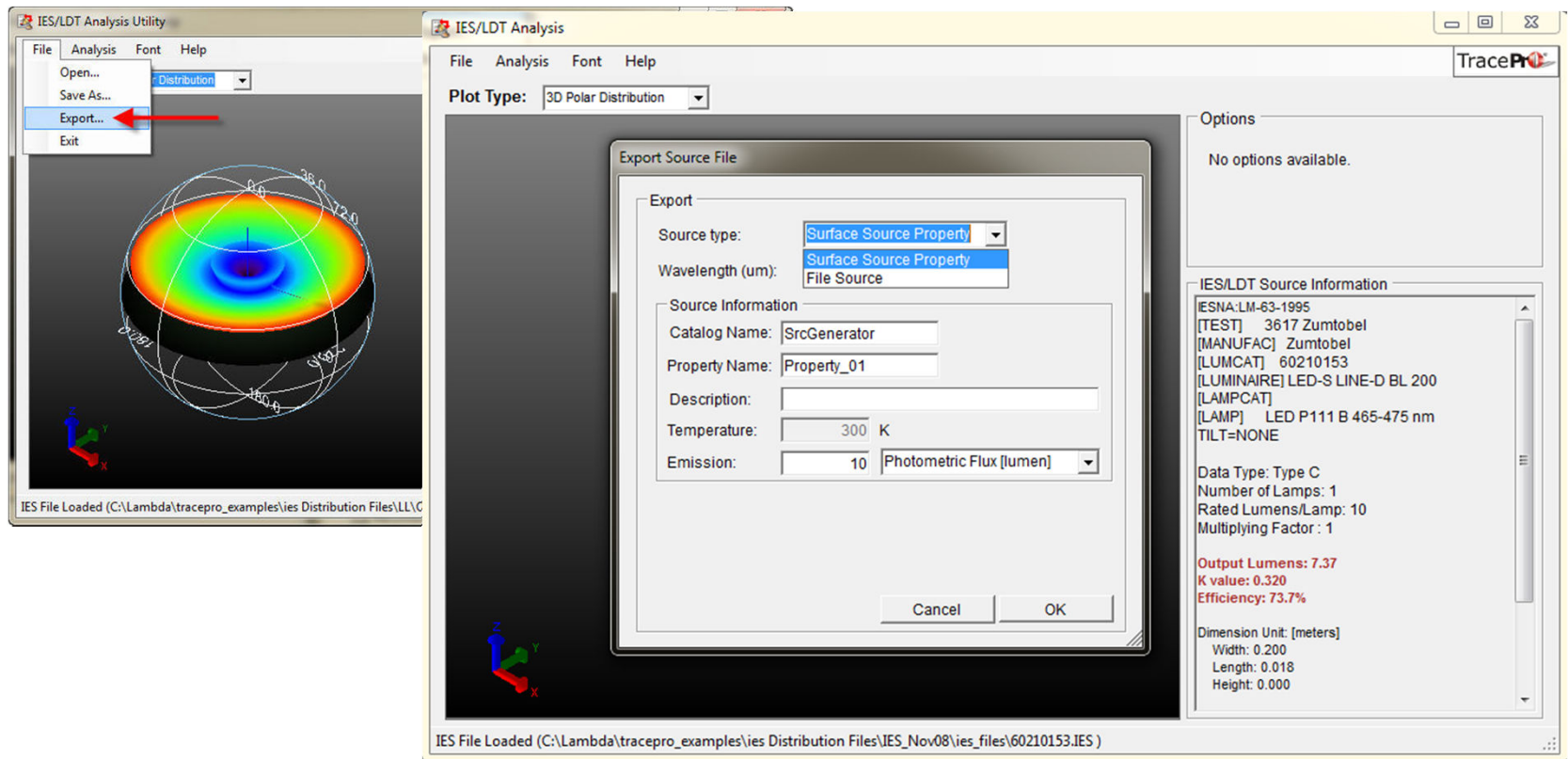
IES/LDT Analysis File Menu

After importing data you can save files to other formats including IES and LDT formats from the utility's File | Save As menu.



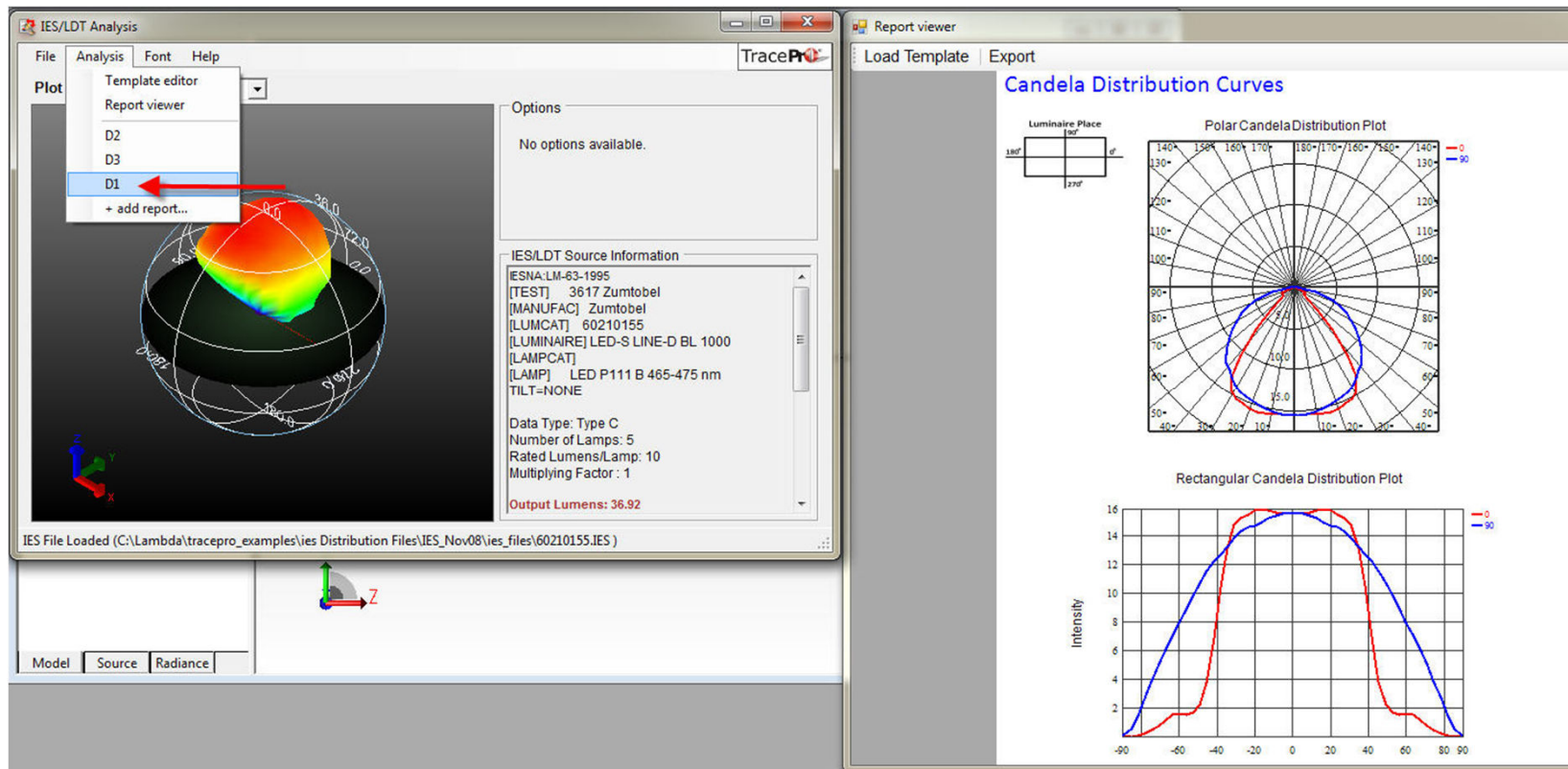
IES/LDT Utility File Menu

The utility's File menu has an Export option to export data in both TracePro Surface Source and File Source Property formats.



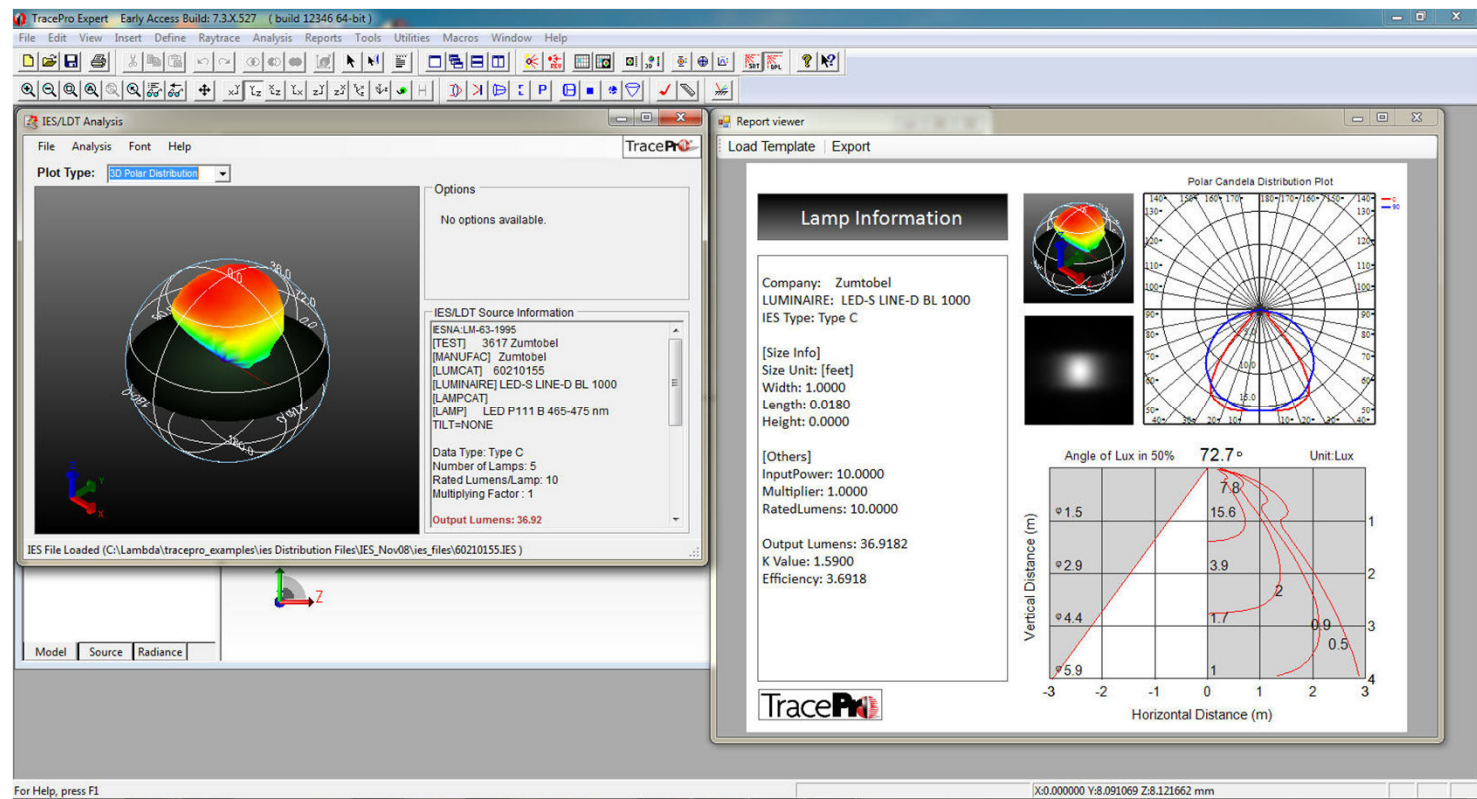
IES/LDT Utility Analysis Menu

The utility's Analysis menu features a built-in D1 labeled report which displays both the polar and rectangular candela distribution curves in the report viewer.



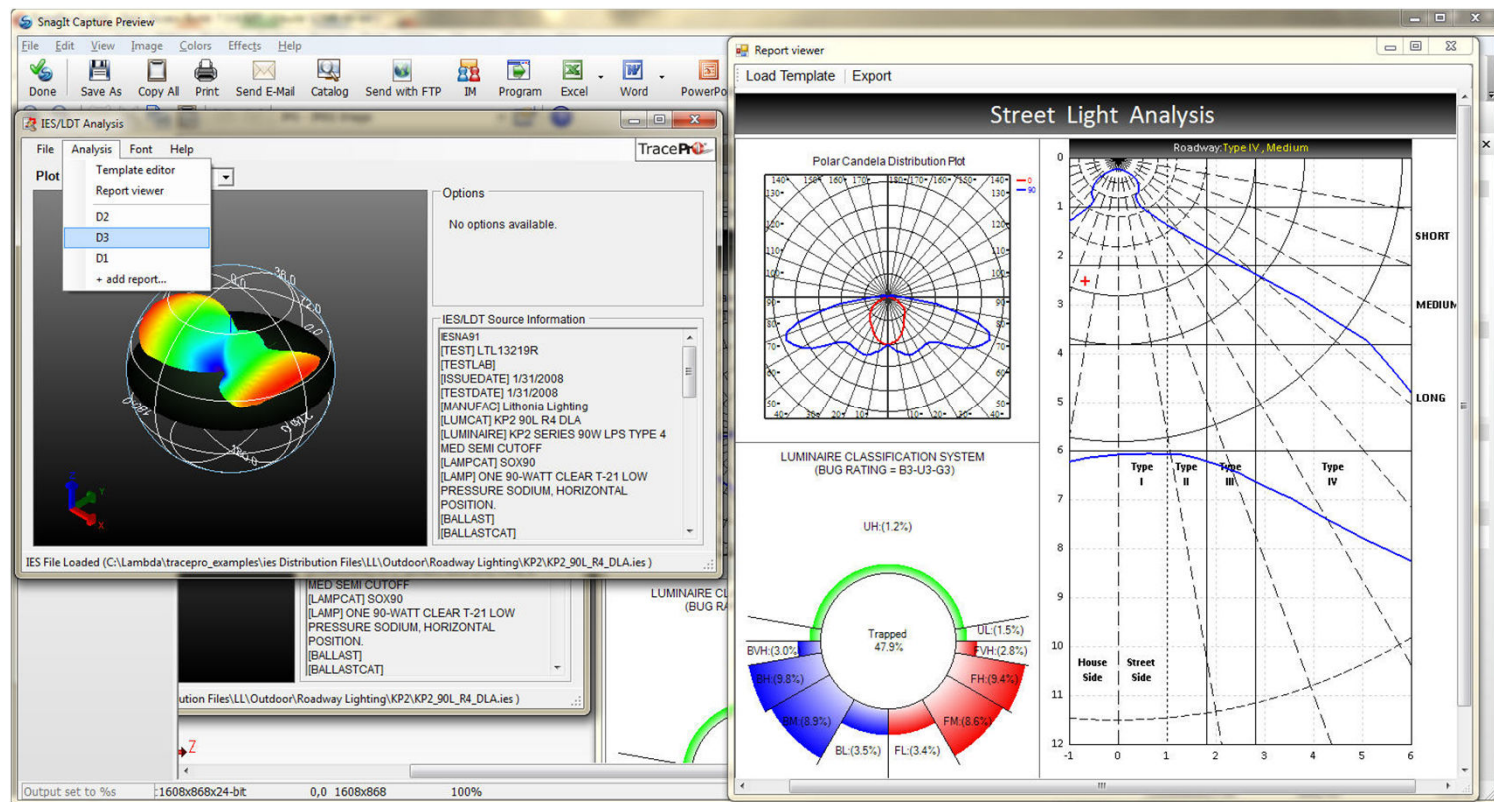
IES/LDT Utility Analysis Menu

The utility's Analysis menu features a built-in D2 report which displays standard lamp information including candela and luminaire classification information and plots.



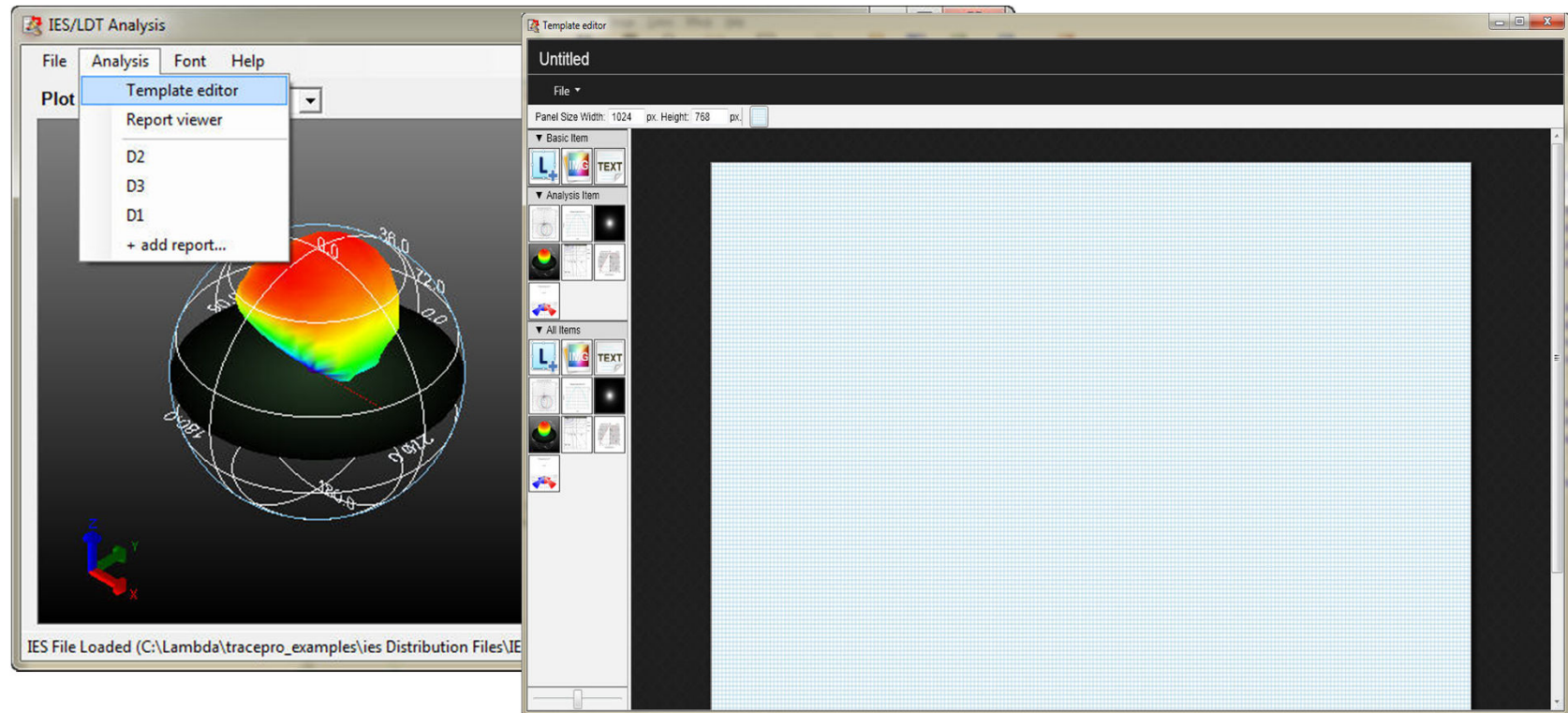
IES/LDT Utility Analysis Menu

The utility's Analysis menu features a built-in D3 report which displays standard Polar Candela plots, a Luminaire Classification and Roadway Classification plots.



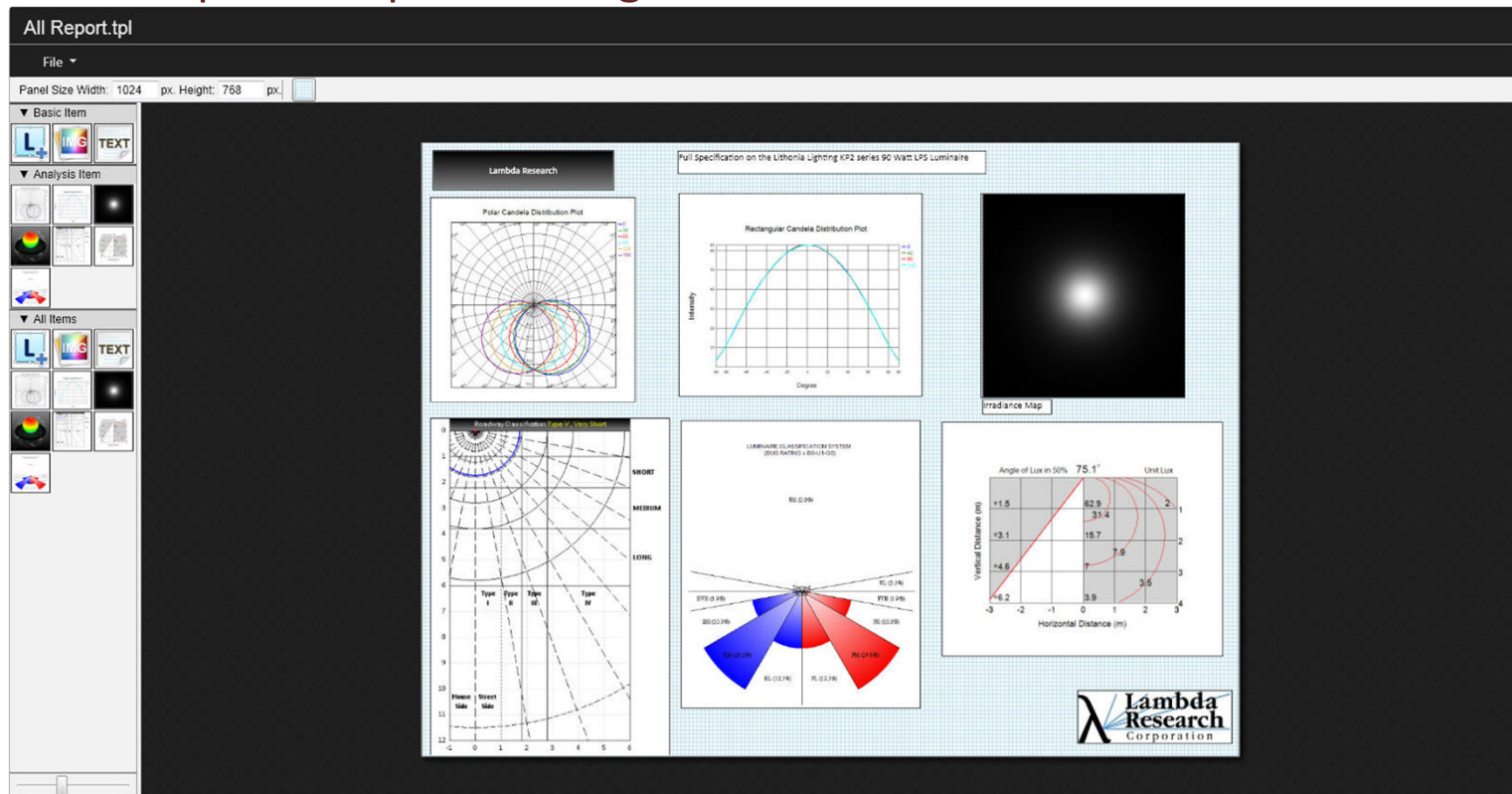
IES/LDT Utility Analysis Menu

The utility's template Editor has multiple options to create your own report template. This includes the capability to add images, text, logos and analysis information anywhere in the template including candela, irradiance, luminaire and roadway classifications.



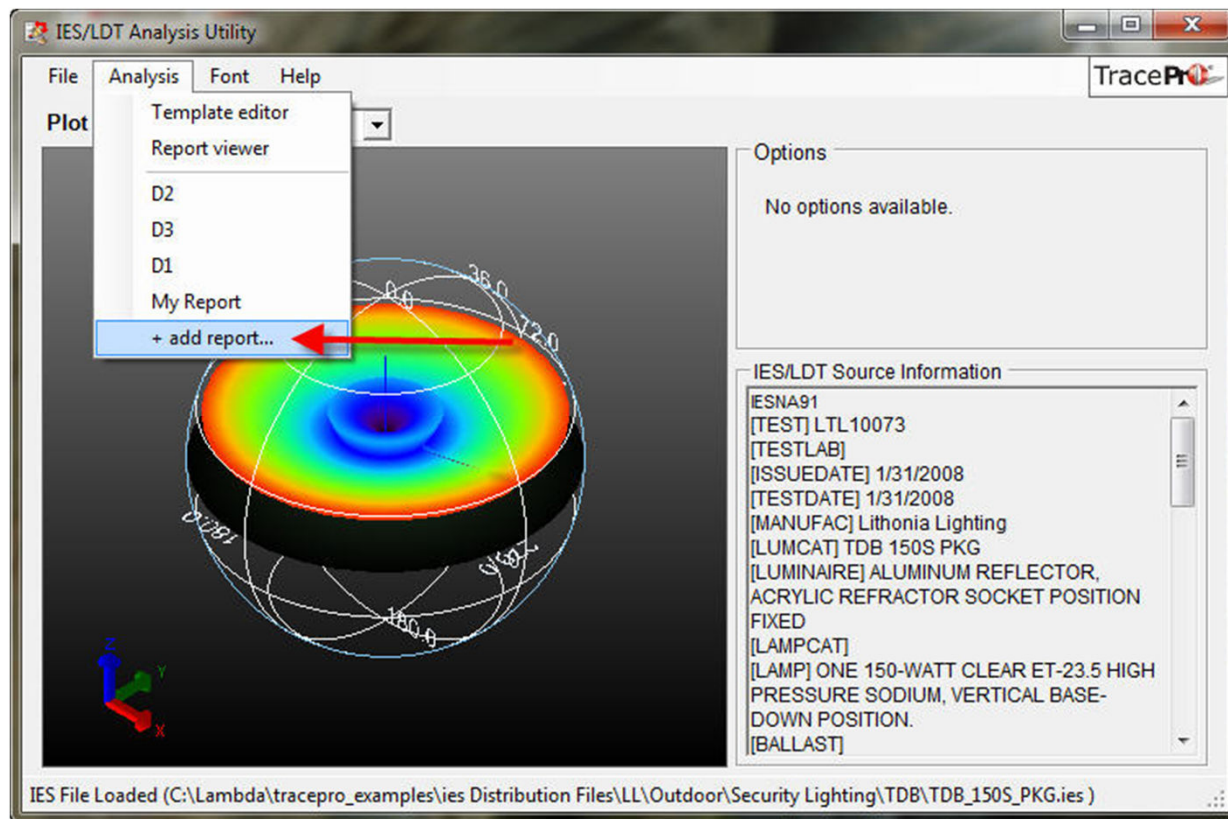
IES/LDT Utility Analysis Menu Template Editor

The Template Editor allows the user to place items in the template using drag and drop operations from the top left set of menu items. Save created report templates using the File → Save feature for later use.



IES/LDT Utility Analysis Menu

A user created report can be added to the menu by using the + add report menu selection item under the Analysis Menu. The report created in the last slide was added as My Report and is now listed as a menu item.



IES/LDT Utility Analysis Report Viewer Menu

User created reports can be loaded from the Analysis → Report Viewer using the Load menu selection. Just browse for any user defined template to load the report with all the template specified data (security light shown)

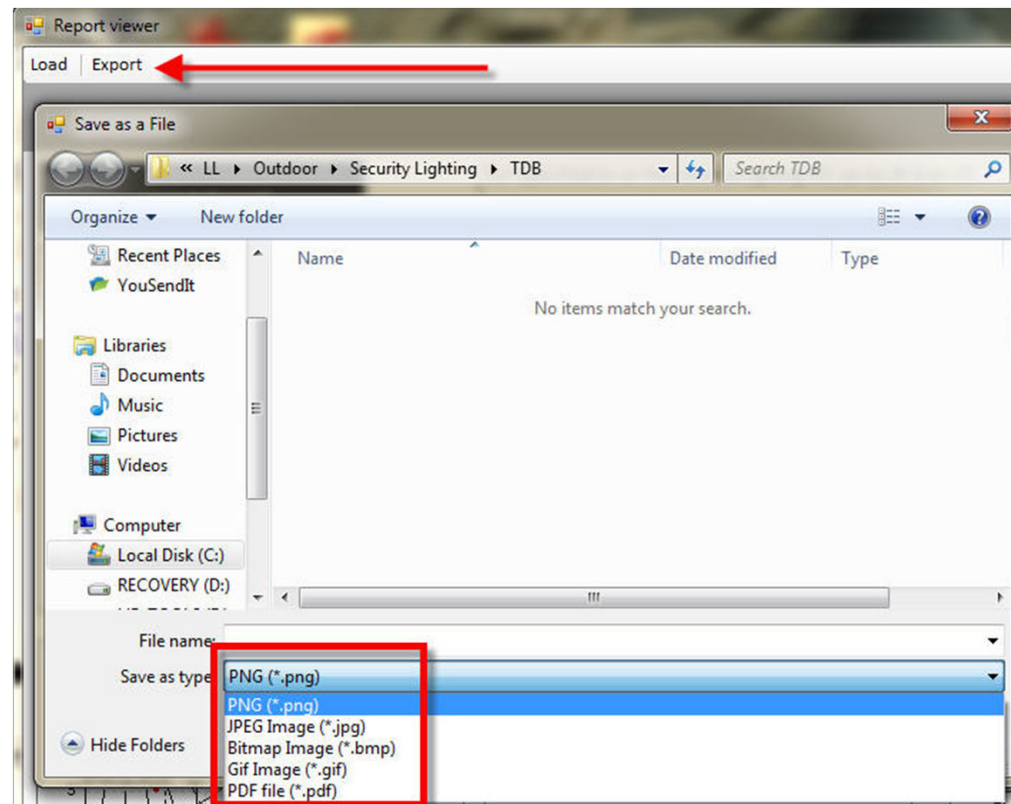
The screenshot displays the IES/LDT Utility software interface. The main window shows a 3D light distribution plot. A 'Report viewer' window is open, showing a file explorer with 'All Report.tpl' selected. The 'Load' menu is highlighted. The background shows various analysis results:

- Polar Candela Distribution Plot:** A circular plot showing light intensity distribution.
- Rectangular Candela Distribution Plot:** A line graph showing intensity vs. degree.
- Irradiance:** A circular plot showing light intensity distribution.
- LUMINAIRE CLASSIFICATION SYSTEM (BUG RATING = B4-U3-G4):** A circular diagram showing light distribution with categories: UH(0.0%), UL(0.8%), BVH(4.7%), FVH(4.7%), BM(11.0%), FL(2.5%), FM(11.0%), FH(19.4%), and BL(2.5%).
- Angle of Lux in 50%:** A graph showing the angle of lux in 50% vs. horizontal distance (m).

The Lambda Research Corporation logo is visible in the bottom right corner of the screenshot.

IES/LDT Utility Analysis Report Viewer Menu

Export a report brought into the Viewer using the Export Menu selection. 5 formats are available, PNG, JPEG, BMP, GIF and PDF.





Live Demonstration of IES/LDT/Candela Utility

It is very easy to import, create reports and export reports from this new utility.

- The example files, recorded session and slides for this webinar will be placed in the webinar section of the Lambda Research Website for later viewing and use.
- The new IES/LDT Analysis Utility is in current release in the TracePro 7.3 Early Access release available to any user on TracePro support.
- The IES/LDT Utility is now available for customers on support. Download and send us your feedback sales@lambdaresearch.com



Q & A

A & Q



Thank You

Copyright © Lambda Research
Corporation 2013, All Rights Reserved





For Additional Information Please Contact:

Lambda Research Corporation
Littleton, MA
978-486-0766
sales@lambdares.com
www.lambdares.com