



Software for Opto-Mechanical Modeling

---

**OSLO**

Optics Software for Layout and Optimization

---



Software for Opto-Mechanical Modeling

---

## TracePro OSLO RayViz Trial Quickstart Guide

Revision 2 April 2021



Lambda Research Corporation  
25 Porter Road  
Littleton MA 01460-1434 USA  
Tel: (+1) 978-486-0766  
FAX: (+1) 978-486-0755  
[www.lambdaresearch.com](http://www.lambdaresearch.com)  
[support@lambdaresearch.com](mailto:support@lambdaresearch.com)

# **COPYRIGHT AND TRADEMARK ACKNOWLEDGMENTS**

## ***COPYRIGHT***

The TracePro, OSLO, and RayViz software and manual are Copyright © 2021 by Lambda Research Corporation. All rights reserved.

This software may only be used by one user per license obtained from Lambda Research Corporation.

This manual contains proprietary information. This information as well as the rest of the manual may not be copied in whole or in part, or reproduced by any means, or transmitted in any form without the prior written consent of Lambda Research Corporation.

## ***TRADEMARKS***

TracePro and OSLO are registered trademarks of Lambda Research Corporation.

TracePro Bridge and RayViz are trademarks of Lambda Research Corporation.

CodeMeter is a registered trademark of Wibu Systems AG

ACIS is a registered trademark of Spatial Corporation.

SolidWorks is a registered trademark of SolidWorks Corporation.

Adobe and Acrobat are trademarks of Adobe Systems Incorporated.

Windows and Microsoft are either registered trademarks or trademarks of Microsoft Corporation in the United States and/or other countries.

All other names and products are trademarks of their respective owners

# Contents

<b>TracePro</b>	<b>1</b>
Download TracePro .....	1
Install TracePro.....	2
Launch TracePro.....	2
<b>OSLO</b>	<b>3</b>
Download OSLO .....	3
Install OSLO .....	4
Launch OSLO .....	4
<b>RayViz</b>	<b>5</b>
Download RayViz .....	5
Install RayViz .....	6
Launch RayViz .....	6
<b>Request Trial License</b>	<b>7</b>
<b>Activate License</b>	<b>7</b>



# TRACEPRO

---

## Download TracePro

- Go to <http://lambdaresearch.com/support/tracepro-current-release/>



### TracePro Current Release

[Support](#) > [TracePro](#) > [TracePro Releases](#) > [TracePro Current Release](#)

---

#### TracePro 2021 21.1 Released – 10 February 2021

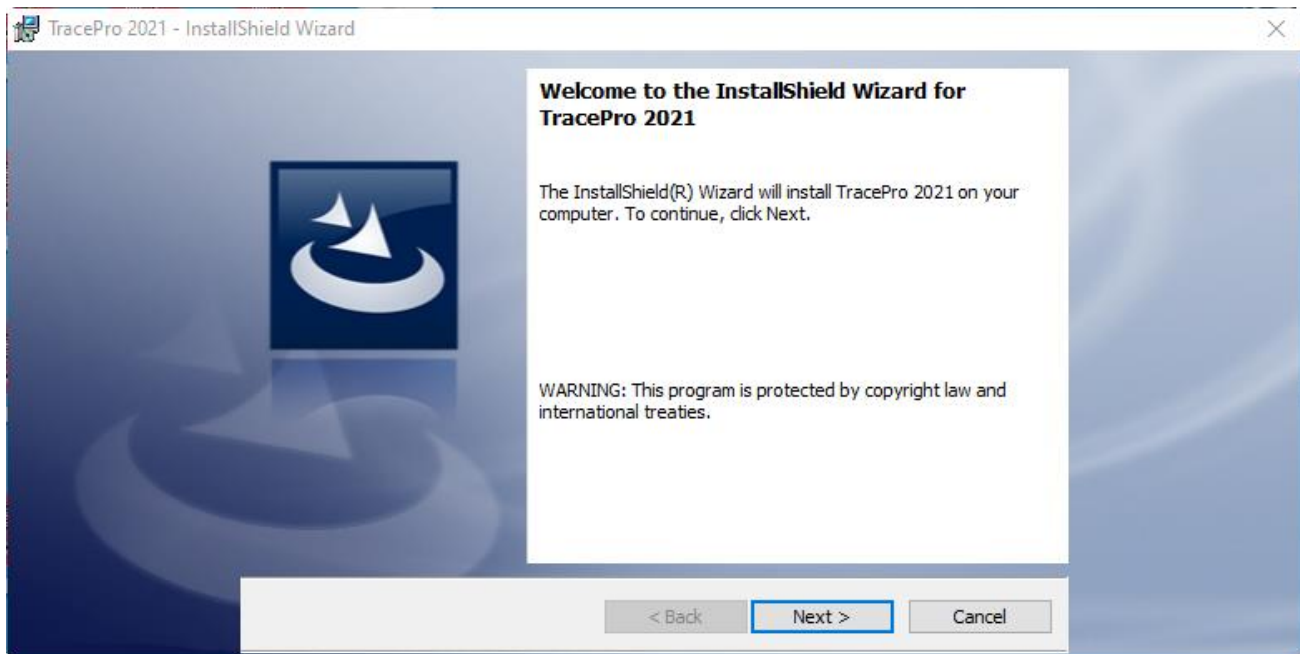
- **STEP 1 – Download and install TracePro**
  - [TracePro Installer](#)
- **STEP 2 – Download and install on Network License Servers**
  - [Lambda Network License Server Installer](#)
- **STEP 3 – Request TracePro License**

- Save the TracePro Installer.exe file to a convenient location on your computer.

---

## Install TracePro

- Double-click on the Installer.exe file to begin the installation.
- Follow the steps of the TracePro Installation Wizard.

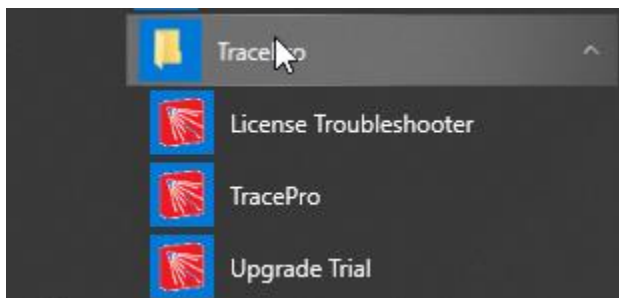


- Click **Finish** to complete the installation.

---

## Launch TracePro

- To launch TracePro, select the icon from the Windows Start menu.



# OSLO

---

## Download OSLO

- Go to <http://lambdaresearch.com/support/oslo-current-release/>



### OSLO Current Release

[Support](#) > [OSLO](#) > [OSLO Releases](#) > [OSLO Current Release](#)

---

OSLO 2021 21.1 Released 10 March 2021

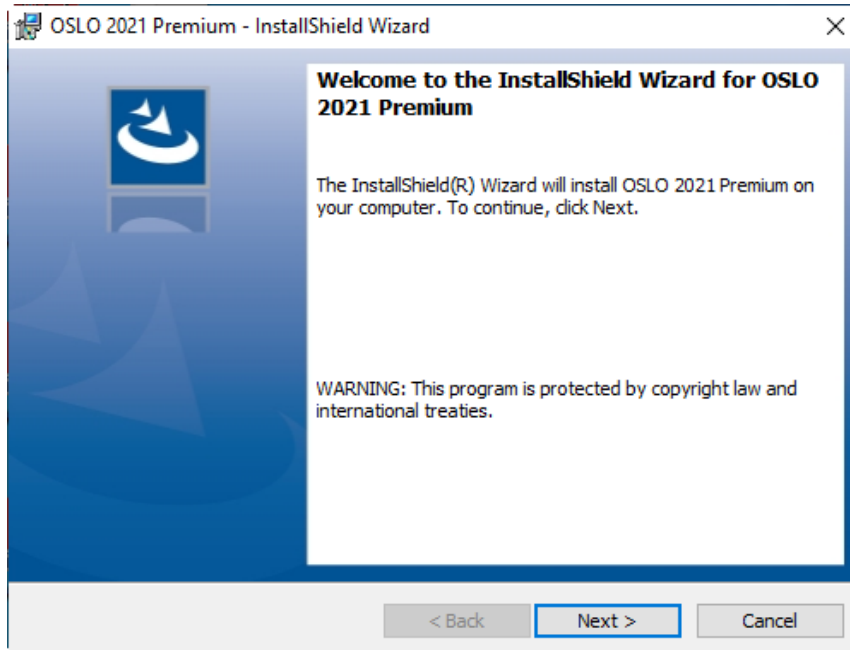
- **STEP 1 - Download and install OSLO**
  - [OSLO Premium Installer](#)
- **STEP 2 - Download and install on Network License Servers**
  - [Lambda Network License Server Installer](#)
- **STEP 3 - Request OSLO License**

- Save the OSLO Premium Installer.exe file to a convenient location on your computer.

---

## Install OSLO

- Double-click on the OSLO Installer.exe file to begin the installation.
- Follow the steps of the OSLO Installation Wizard.



- Click **Finish** to complete the installation.

---

## Launch OSLO

To launch OSLO, select the icon from the Windows Start→Programs menu.





# RAYVIZ

---

## Download RayViz

- Go to <http://lambdaresearch.com/support/rayviz-current-release/>



### RayViz Current Release

[Support](#) > [RayViz](#) > [RayViz Releases](#) > [RayViz Current Release](#)

---

#### RayViz 2021 21.1 Released – 10 February 2021

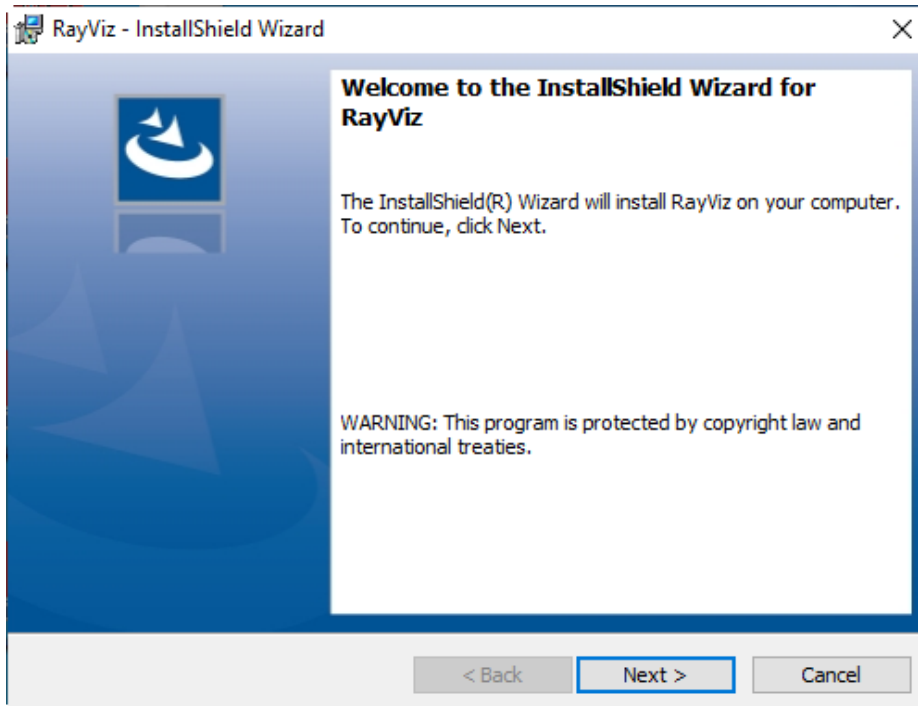
- **STEP 1 – Download and install RayViz**
  - [RayViz Installer](#)
- **STEP 2 – Download and install on Network License Servers**
  - [Lambda Network License Server Installer](#)
- **STEP 3 – Request RayViz License**

- Save the RayViz Installer.exe file to a convenient location on your computer.

---

## Install RayViz

- Prior to installing RayViz, exit any active sessions of SolidWorks.
- Double-click on the RayViz Installer.exe file to begin the installation.
- Follow the steps of the RayViz Installation Wizard.



- Click **Finish** to complete the installation.

---

## Launch RayViz

To launch RayViz, start SolidWorks.

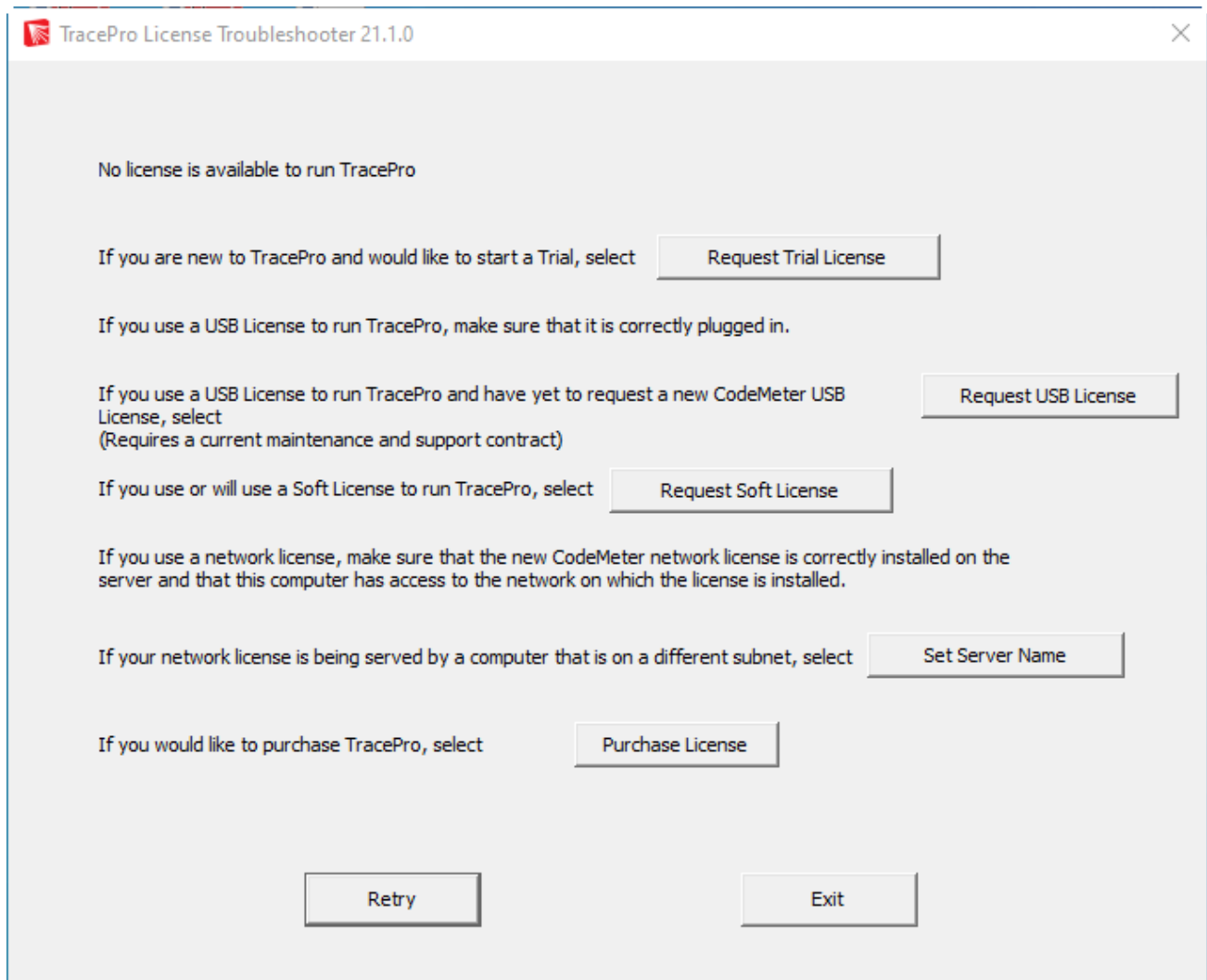
The default condition is that the RayViz add-in will be loaded when SolidWorks starts.

The RayViz Add-In can be turned ON or OFF by selecting Tools/Add-Ins in SolidWorks and checking the boxes for Active and Start Up.

# REQUEST TRIAL LICENSE

Please note that a single license runs TracePro, OSLO, and RayViz, only one license request is required.

Launch TracePro, OSLO, or RayViz, and when no valid license is detected, the License Troubleshooter dialog will open.



- Select the Request Trial License option to send a CodeMeter context file to [sales@lambdare.com](mailto:sales@lambdare.com)
- Enter your name and organization in the e-mail

# ACTIVATE LICENSE

- Upon receipt of a CodeMeter Update file from [license@lambdare.com](mailto:license@lambdare.com), save the file, double-click on the file to activate the license.

